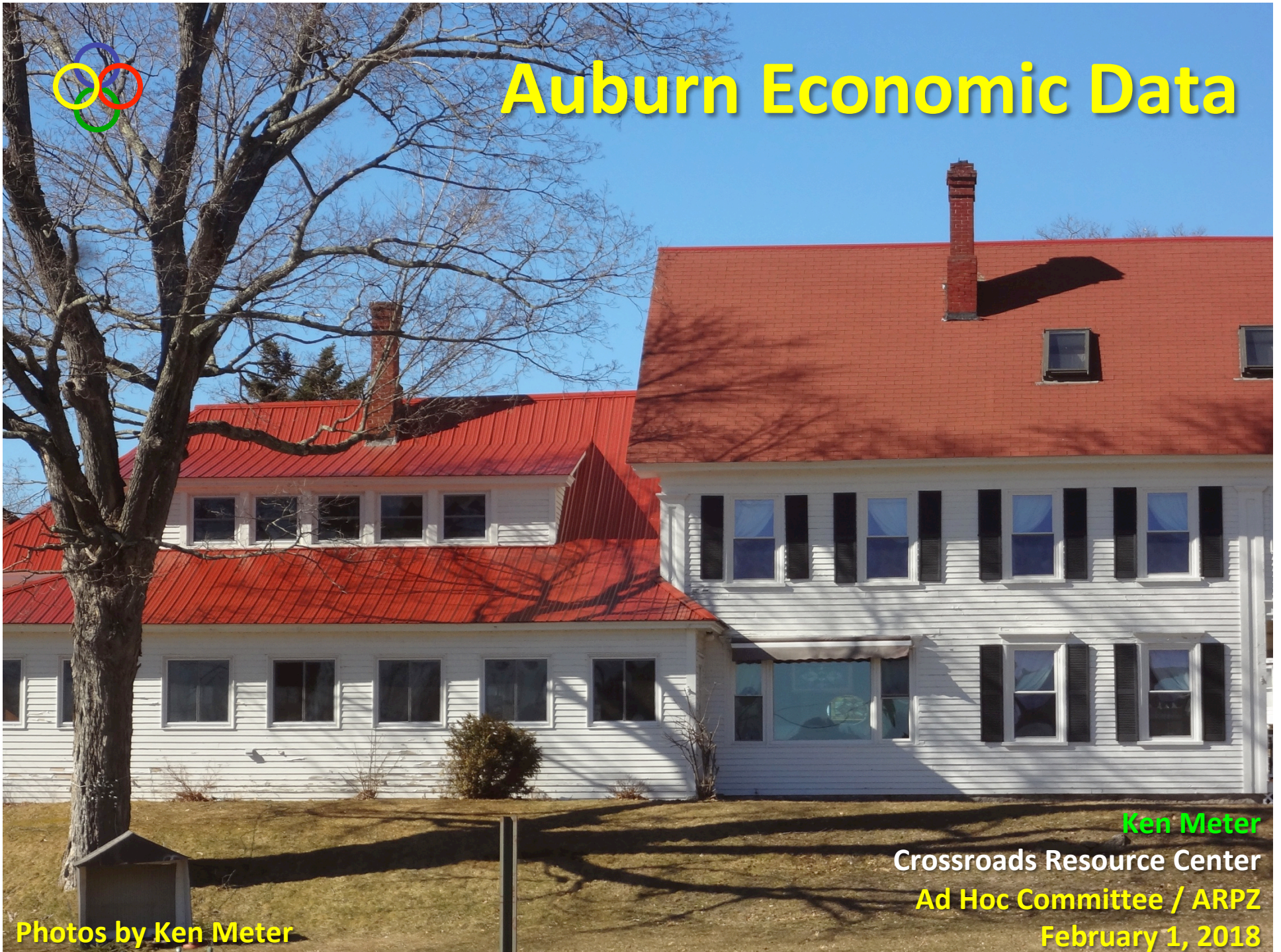




# Auburn Economic Data

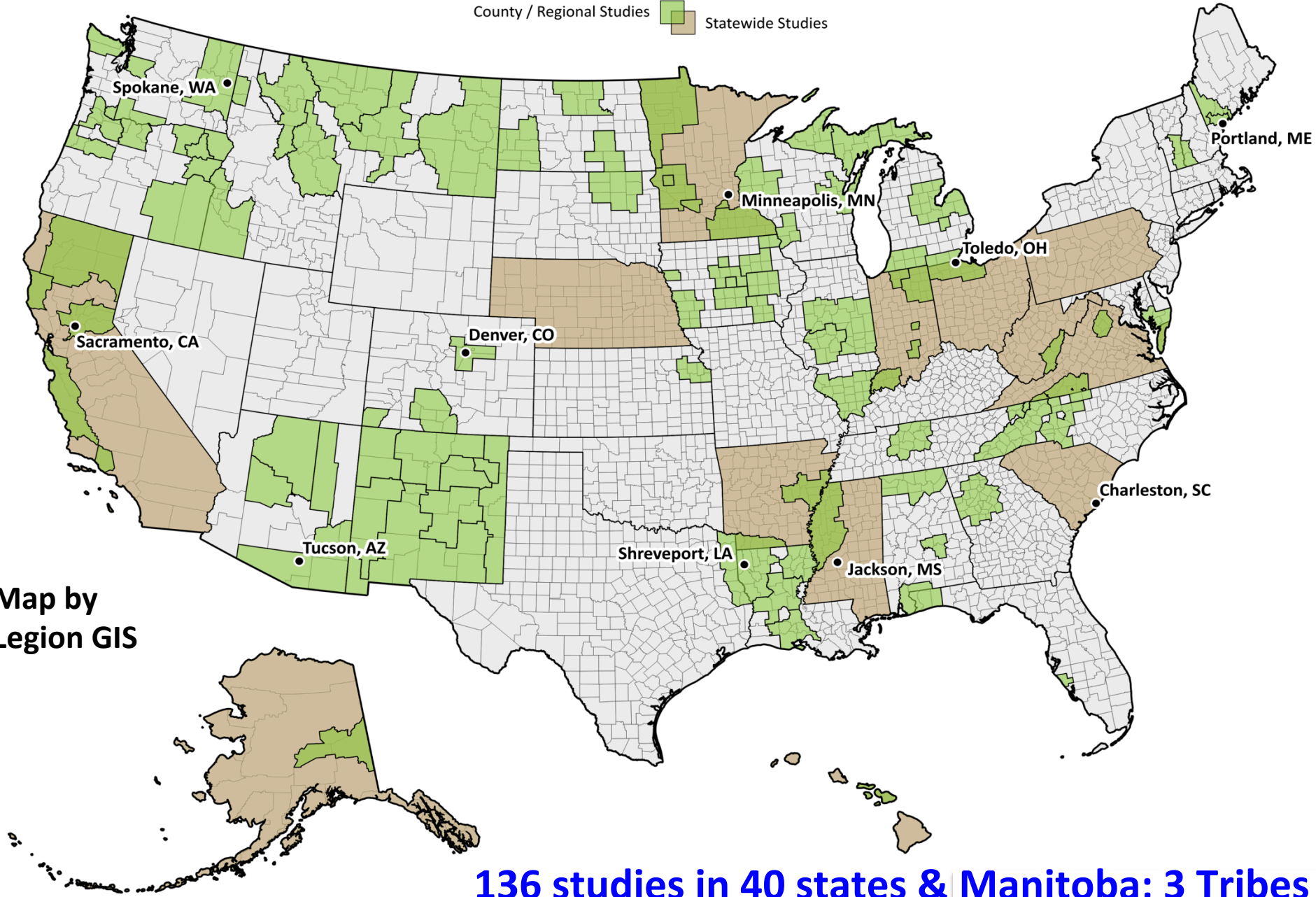


Photos by Ken Meter

**Ken Meter**  
Crossroads Resource Center  
Ad Hoc Committee / ARPZ  
February 1, 2018

# CRC Farm & Food Economy Studies

County / Regional Studies  Statewide Studies 



Map by  
Legion GIS

**136 studies in 40 states & Manitoba; 3 Tribes**



**Corinna, Kurt, & Jed Bench**

**Elmore, Ohio**

Matt & Jerica Cadman



East Texas

Newt Lynn



7760

JOHN D

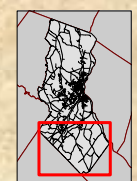
Cavett, Louisiana



- Tax Parcels**
- < 2 acres
  - >= 2 acres
- Soils**
- All areas are prime farmland
  - Farmland of statewide importance



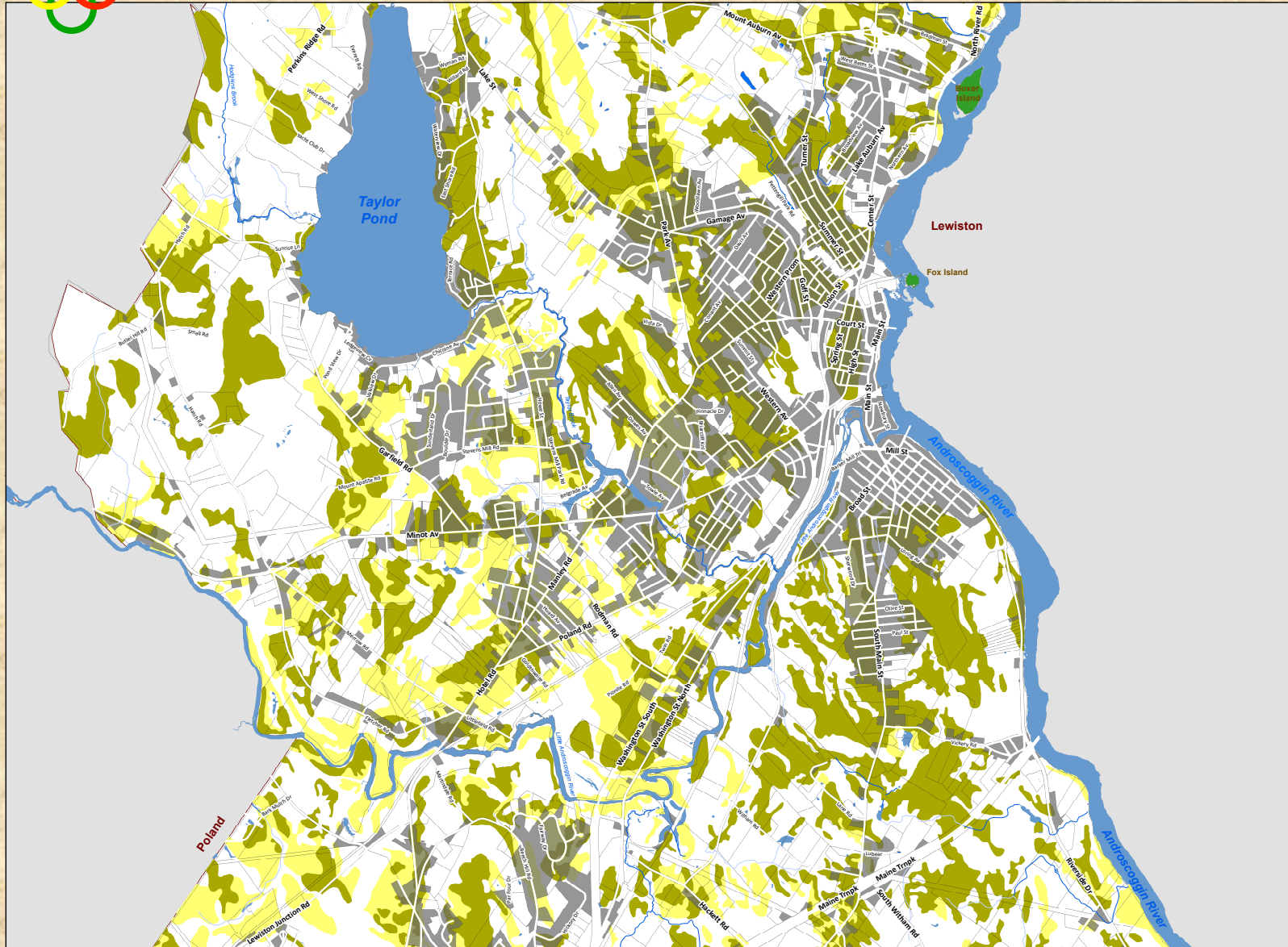
**Agricultural Soils Map**  
**City of Auburn**  
**South Section**



Notes:  
Parcel Data provided by the City of Auburn.  
Soils data from NRCS (<https://websoilsurvey.sc.egov.usda.gov>)  
Map printed: January 2018



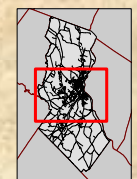
**Map by City of Auburn**



- Tax Parcels**
- < 2 acres
  - >= 2 acres
- Soils**
- All areas are prime farmland
  - Farmland of statewide importance



**Agricultural Soils Map**  
**City of Auburn**  
**Central Section**

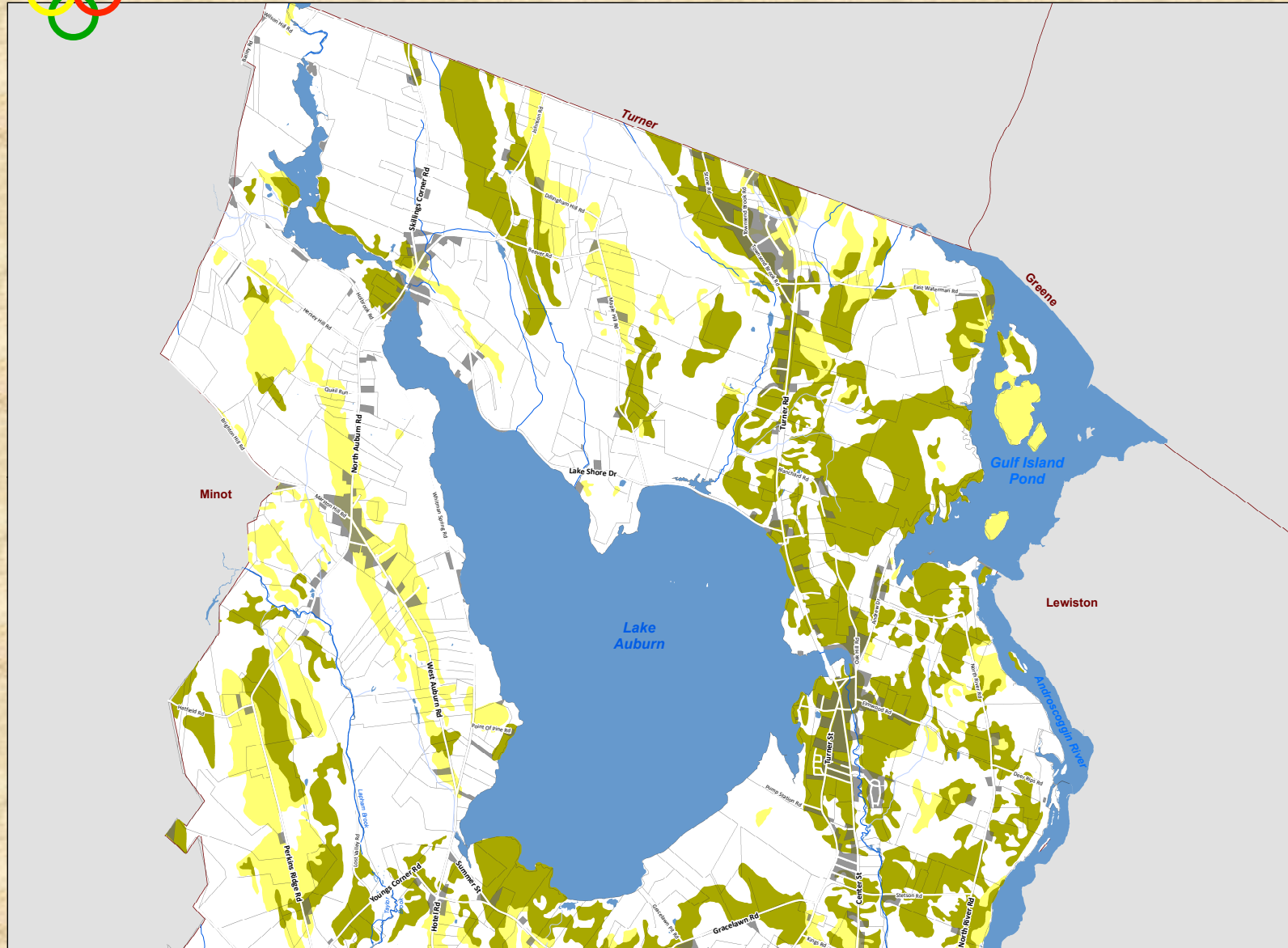


Notes:  
Parcel Data provided by the City of Auburn.  
Soils data from NRCS (<https://websoilsurvey.sc.egov.usda.gov>)

Map printed:  
January 2018



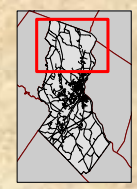
Map by City of Auburn



- Tax Parcels**
- < 2 acres
  - >= 2 acres
- Soils**
- All areas are prime farmland
  - Farmland of statewide importance



### Agricultural Soils Map City of Auburn Northern Section



Notes:  
Parcel Data provided by the City of Auburn.  
Soils data from NRCS (<https://websoilsurvey.sc.egov.usda.gov>)  
Map printed:  
January 2018



Map by City of Auburn





Sebago, Maine



## Purposes of Ad Hoc Steering Committee:

1. Understand the **agricultural and natural resource economic context** in which Auburn farmers and consumers lead their daily lives.
2. **Consider and possibly make recommendations for refining** the Agriculture and Resource Protection Zoning (ARPZ) adopted by the City of Auburn in 1964 and amended in later years.



**David Bell, Auburn, Maine**



## **Initial ARPZ Ordinance 1964:**

**The 1964 ordinance established that protecting farmland in the City was in the public interest.**



## **Purpose of ARPZ:**

**To concentrate new development close to downtown and major highways.**

**This was in large part to limit public costs for providing utility and school services...**

**While also maintaining an attractive community.**



## **Initial ARPZ Ordinance:**

**Planners assumed that farm income would continue to decline and farm population would decrease.**



## **Blackwell Report (1958)**

**Also assumed that Auburn's population would rise to "45,000-50,000 or more by the year 2000."**

**Actual population in 2016 was 22,948.**



Maple Springs Farm, Harrison, Maine





## Initial ARPZ Ordinance:

Studies also noted that **marketing, processing, and distribution** factors had a greater effect on agriculture than did land availability.



## **Initial ARPZ Ordinance:**

**Yet the ordinance did not address  
the potential for  
strengthening agriculture**



## **Challenges to ARP Zoning**

**In the mid-1980s, developers sought to remove land from the ARPZ in favor of rural housing development.**

**While the Planning Board opposed taking this step, the City Council adopted a plan favoring rural residential development.**

**The courts struck this down.**



## **Impact of ARP Zoning**

**A 1986 review of ARPZ found that farmland had indeed been protected.**

**The most significant loss of open agricultural land was due to forest growth on untilled fields.**



## **Impact of ARP Zoning**

**In later years,  
additional beltways were carved out of the  
ARPZ to allow more  
Rural Residential development.**



**Crystal Spring Farm, Brunswick, Maine**



## **ARP Zoning Reinforced in 2010 Comp Plan**

**The Auburn Comprehensive Plan (2010)  
encouraged greater flexibility in applying  
standards for ARP Zoning**



**Veterans Farmer Project, Fayetteville, Arkansas**





## Auburn Adopts Food Sovereignty Ordinance

Auburn City Council supported a **local food system**, not simply protecting farm and forest **land**, by adopting a Food Sovereignty Ordinance on August 21, 2017.



## **Auburn Adopts Food Sovereignty Ordinance**

**“The intent and purpose of Auburn’s Food Sovereignty Ordinance is to ensure that residents are provided unimpeded access to local food **and** to reduce governmental regulation of the local food system to the fullest extent permitted by home rule authority....”**



Seynab Ali  
Lewiston, Maine

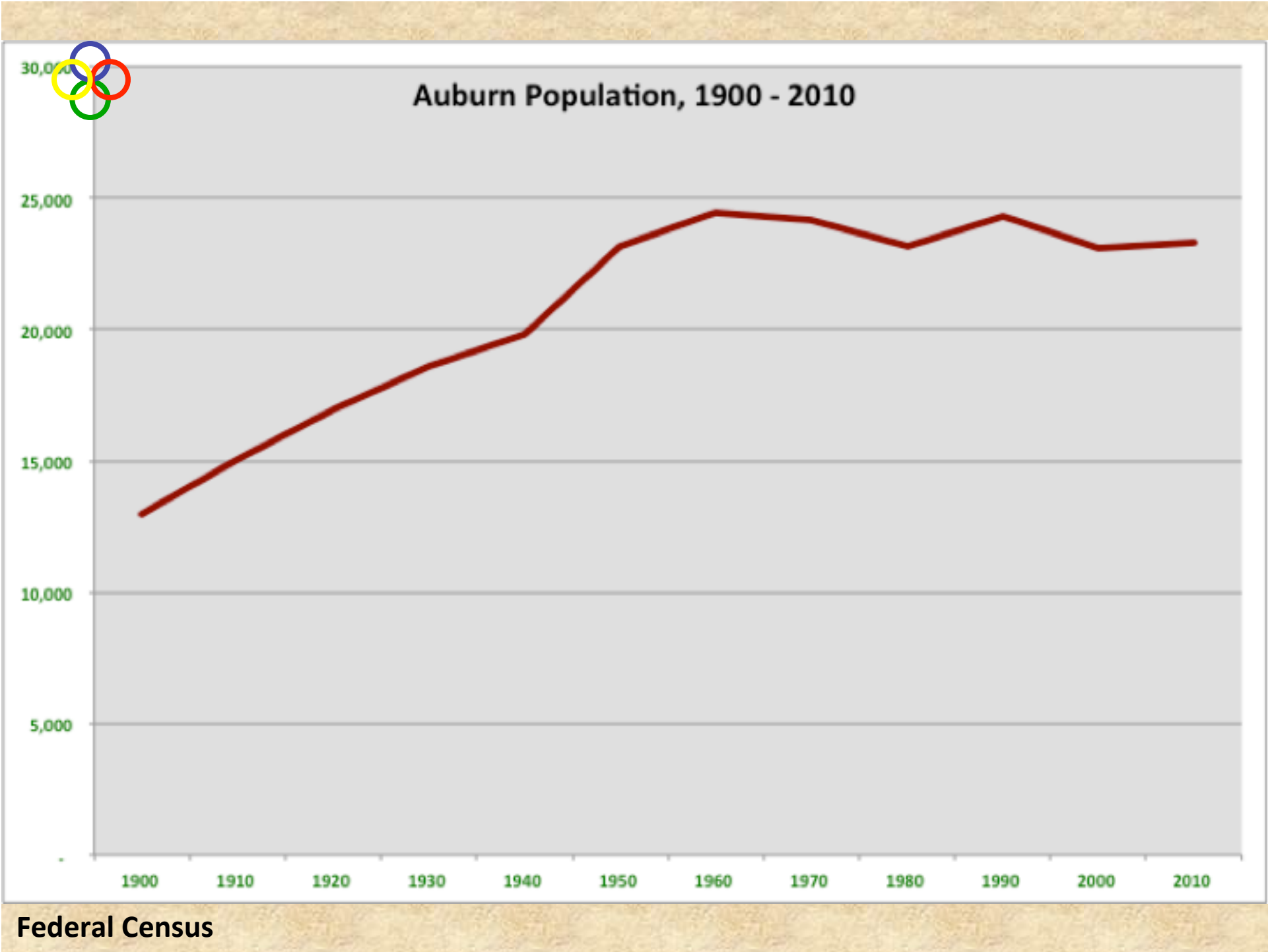




**Hussein Muktar  
Lewiston ME**



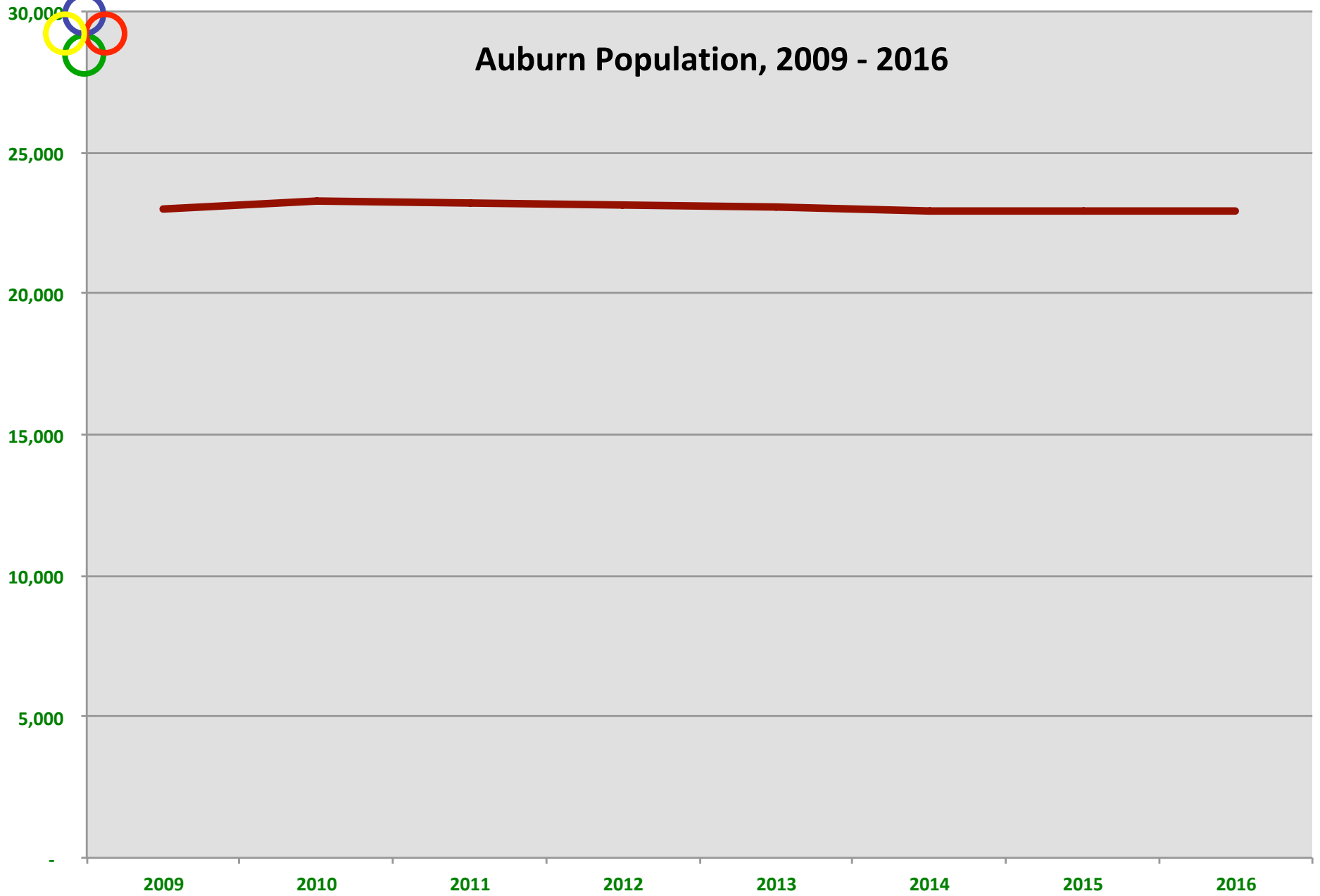
Marché Jean Talon, Montreal, Canada



Federal Census



## Auburn Population, 2009 - 2016





## **Auburn's Workforce**

**17,666 Workers**

**11,277 Live in the City**

**Median household income is \$46,976**

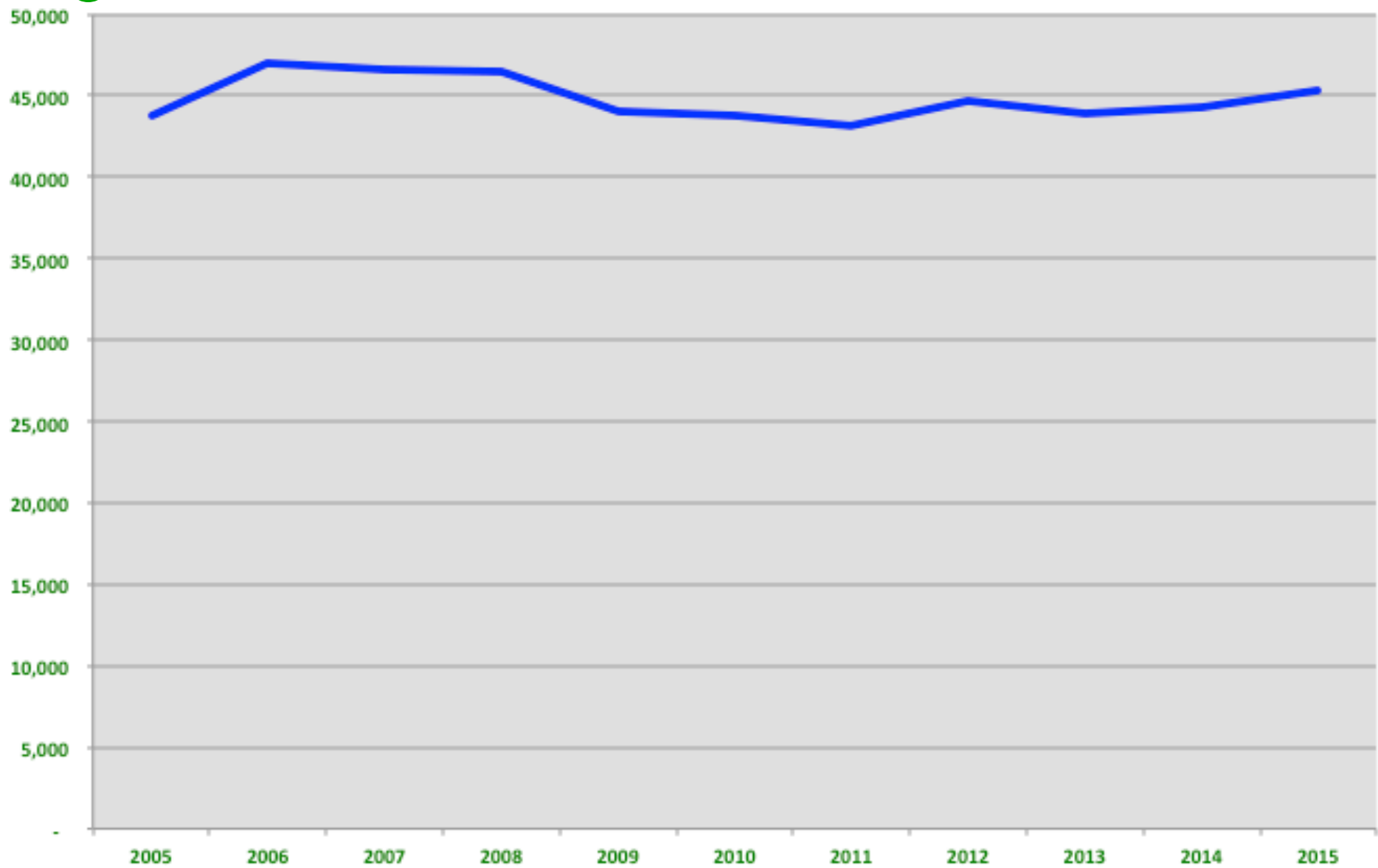
**Unemployment rate is 1.2%**

**1,759 Veterans**





## Total Employment for Androscoggin County Residents, 2005 - 2015

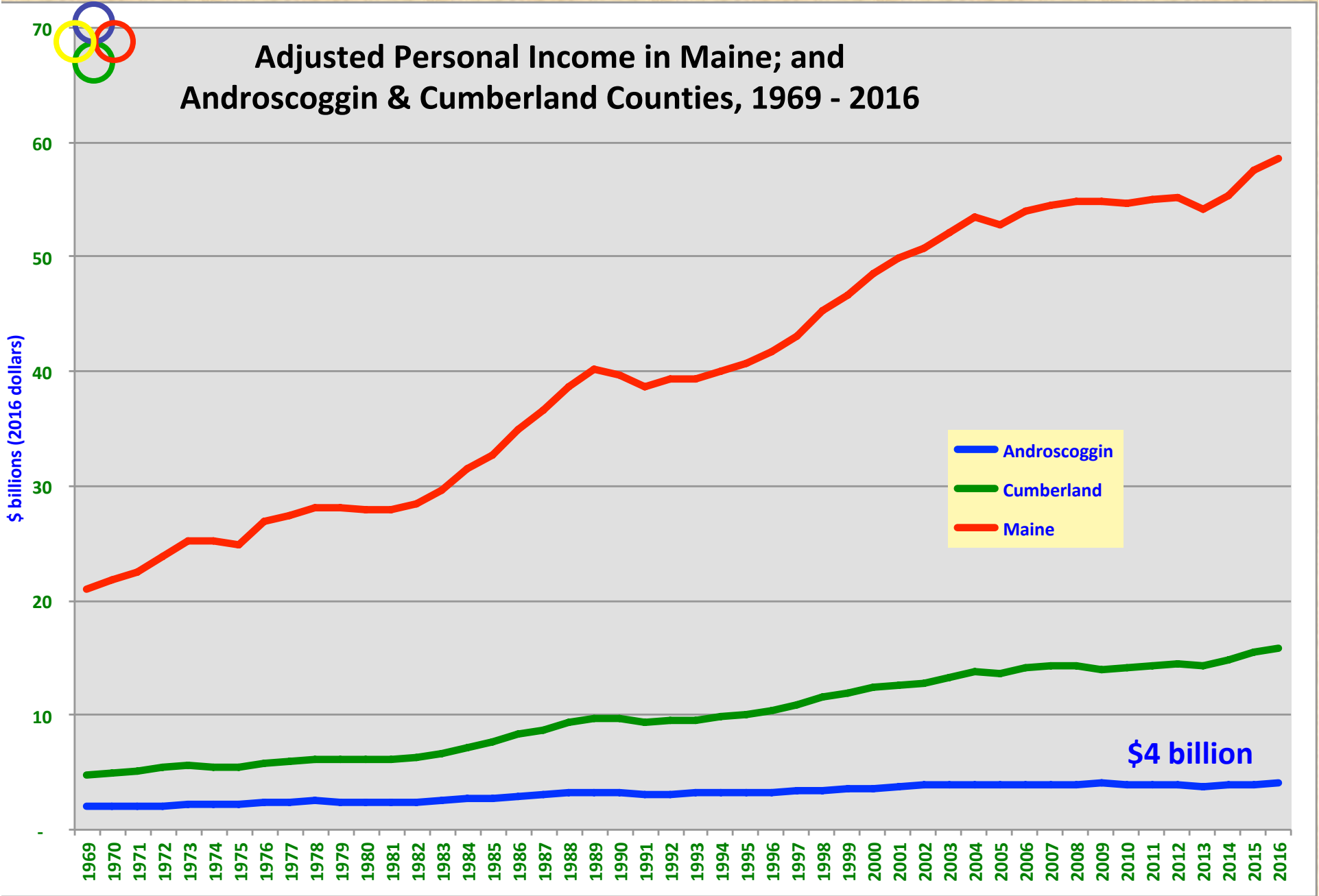


Federal Census



## **Auburn's Household Income**

**Residents earn about  
\$650 million annually**





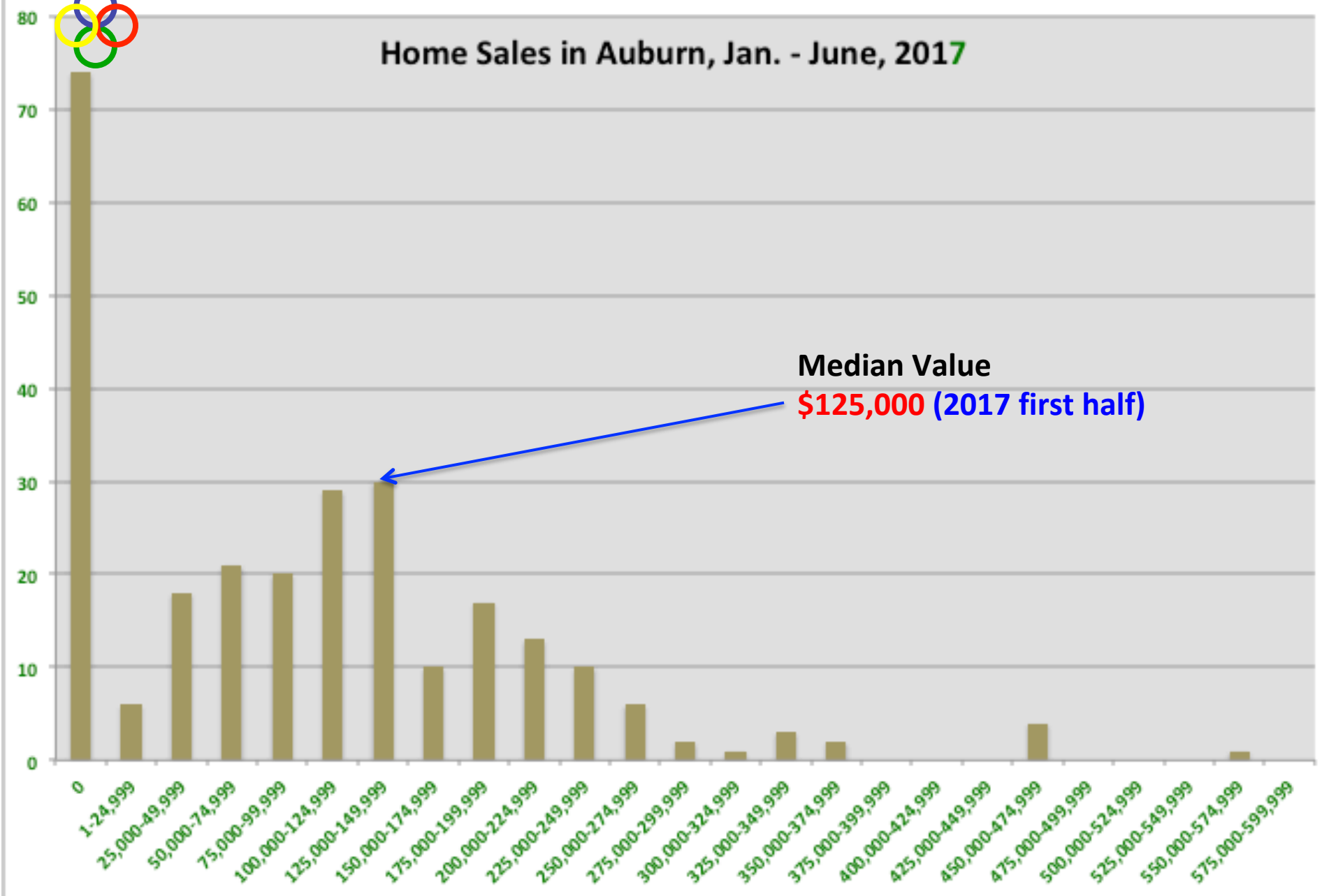
## Auburn's Workforce

Nearly one of every three  
**Auburn** residents lives  
in a household earning less than  
**185% of the Federal Poverty Limit**

[this is an estimate of a livable wage level]



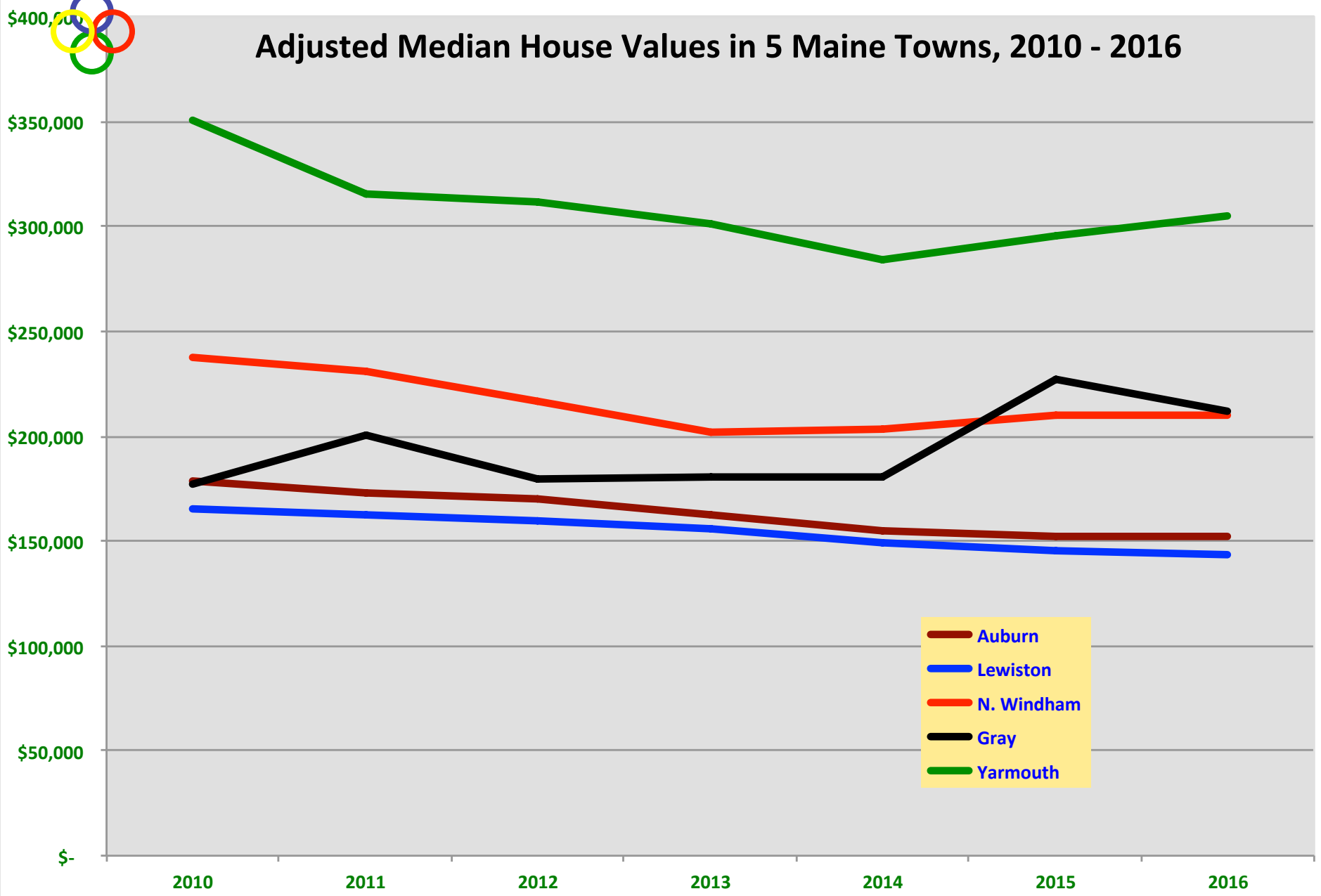
## Home Sales in Auburn, Jan. - June, 2017



**Median Value**  
**\$125,000 (2017 first half)**



## Adjusted Median House Values in 5 Maine Towns, 2010 - 2016







# Androscoggin County



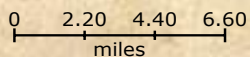
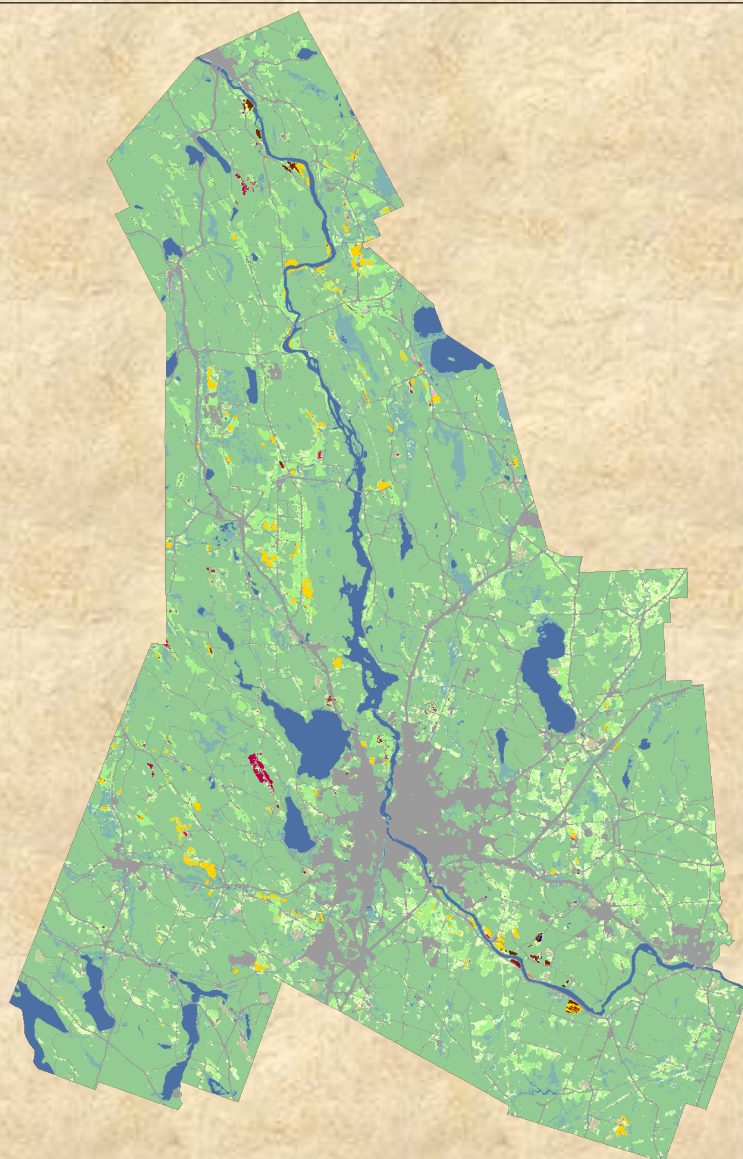
Land Cover Categories  
(by decreasing acreage)

### AGRICULTURE

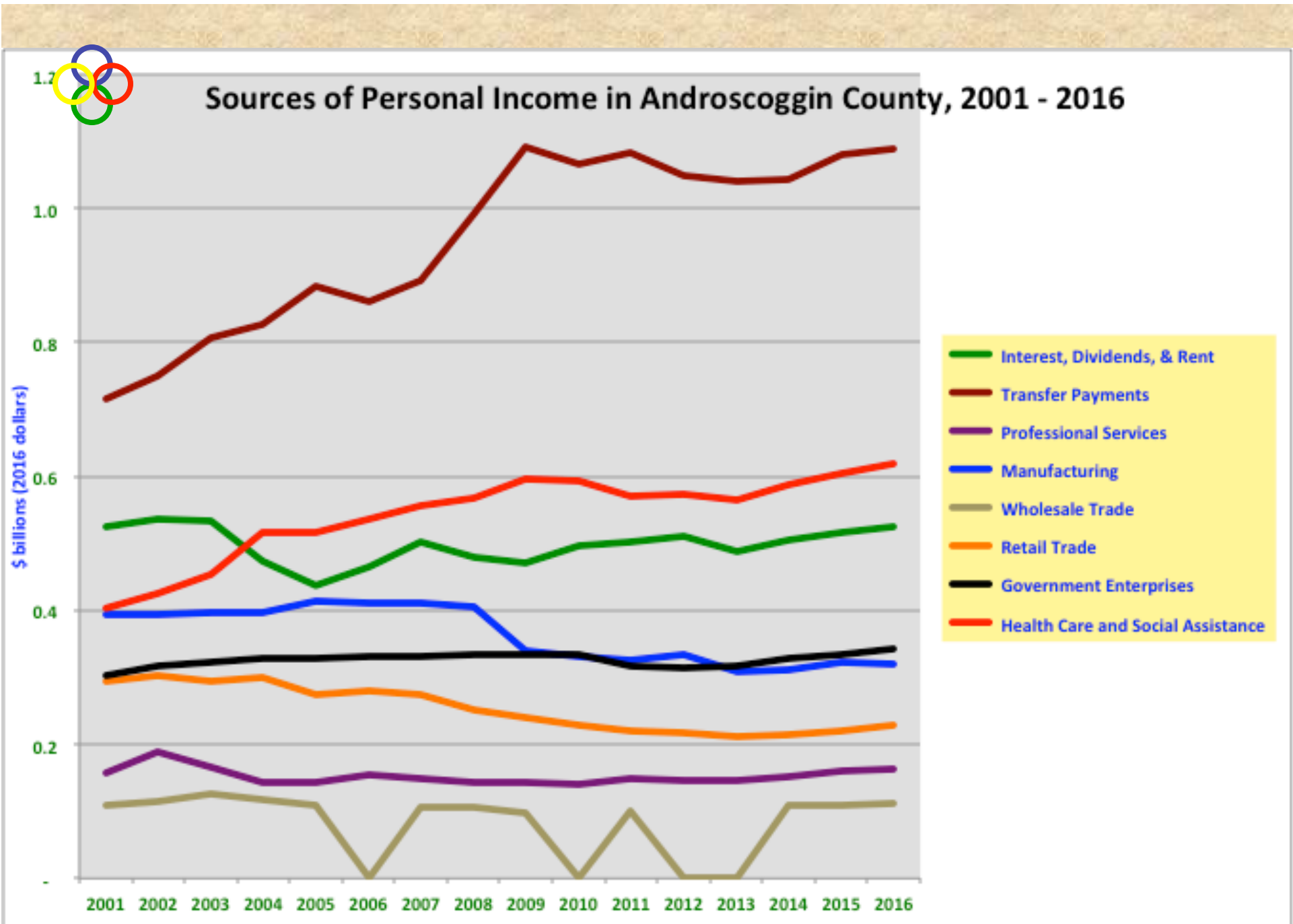
-  Other Hay/Non Alfalfa
-  Grass/Pasture
-  Corn
-  Apples
-  Potatoes
-  Alfalfa
-  Barley
-  Misc Veggies & Fruits
-  Fallow/Idle Cropland
-  Blueberries
-  Oats
-  Buckwheat
-  Cranberries
-  Rye
-  Clover/Wildflowers

### NON-AGRICULTURE\*

-  Mixed Forest
-  Evergreen Forest
-  Deciduous Forest
-  Developed/Open Space
-  Open Water
-  Woody Wetlands

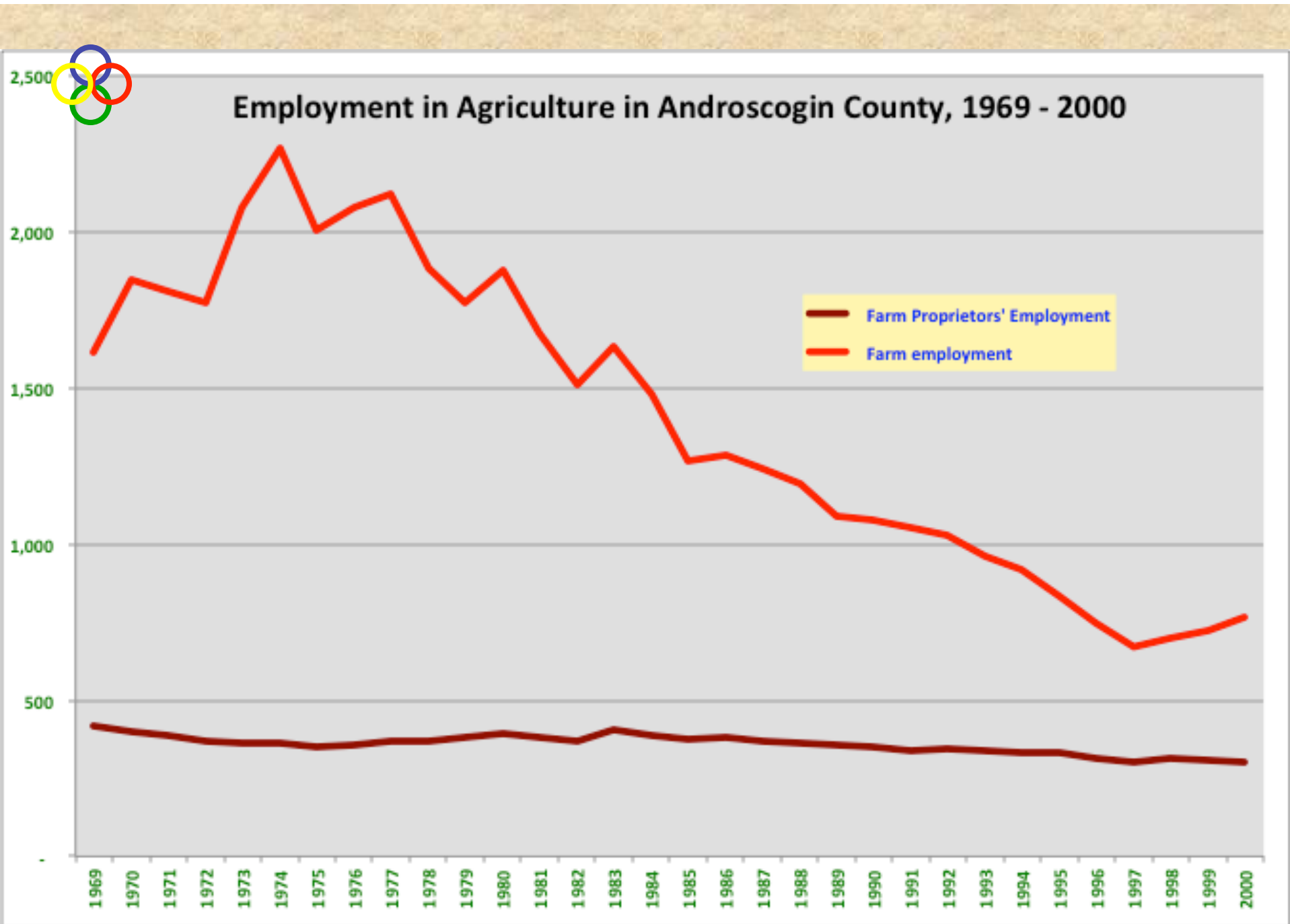


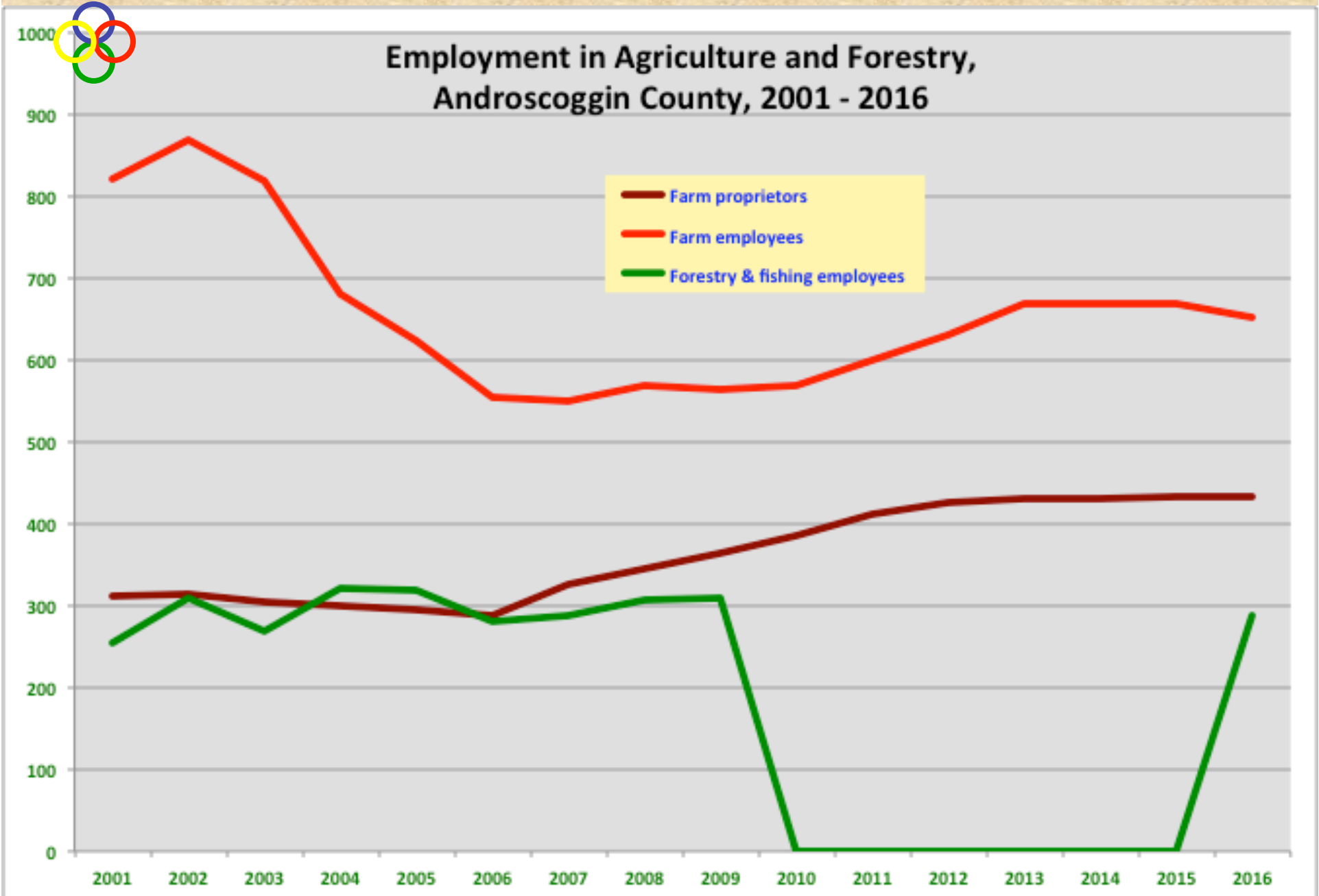






**35% of Androscoggin County  
personal income depends  
on government jobs & projects**







## **Androscoggin County Employment**

**The 12 largest industries account for  
35% of all County employment**



# Androscoggin County Employment

NAICS Code	Industry	Jobs 2016
622110	General Medical and Surgical Hospitals	3,953
903611	Elementary and Secondary Schools (Local Government)	2,846
611310	Colleges, Universities, and Professional Schools	1,751
903999	Local Government, Excluding Education and Hospitals	1,459
561320	Temporary Help Services	1,260
561422	Telemarketing Bureaus and Other Contact Centers	1,253
722511	Full-Service Restaurants	1,187
551114	Corporate, Subsidiary, and Regional Managing Offices	1,175
623210	Residential Intellectual and Developmental Disability Facilities	1,164
623110	Nursing Care Facilities (Skilled Nursing Facilities)	1,095
722513	Limited-Service Restaurants	1,049
445110	Supermarkets and Other Grocery (except Convenience) Stores	1,038
	<b>Total</b>	<b>19,231</b>



## **Androscoggin County Employment**

**Three of the top 12 industries  
in the County involve food,**

**with restaurants and supermarkets  
hiring 3,274 workers.**

**This is 6% of the County workforce**



## Androscoggin County Employment

**While restaurants and supermarkets  
are among the  
County's larger employers,**

**they do not necessarily pay the highest salaries**





Coeur d'Alene Tribe, Idaho



# Androscoggin County Employment (Food)

NAICS	Industry	2016 Jobs
722511	Full-Service Restaurants	1,187
722513	Limited-Service Restaurants	1,049
445110	Supermarkets and Other Grocery (except Convenience) Stores	1,038
312112	Bottled Water Manufacturing	416
722515	Snack and Nonalcoholic Beverage Bars	404
112000	Animal Production and Aquaculture	391
311812	Commercial Bakeries	315
111000	Crop Production	190
424490	Other Grocery and Related Products Merchant Wholesalers	185
722310	Food Service Contractors	166
445120	Convenience Stores	119
722410	Drinking Places (Alcoholic Beverages)	101
312140	Distilleries	85
424810	Beer and Ale Merchant Wholesalers	85
445310	Beer, Wine, and Liquor Stores	63
423820	Farm and Garden Machinery and Equipment Merchant Wholesalers	59
311811	Retail Bakeries	55
445230	Fruit and Vegetable Markets	33
311824	Dry Pasta, Dough, and Flour Mixes Manufacturing	32
311612	Meat Processed from Carcasses	23
312120	Breweries	18
311941	Mayonnaise, Dressing, and Other Prepared Sauce Manufacturing	12
311511	Fluid Milk Manufacturing	-



## Androscoggin County Employment

**If Crop and Livestock Production were combined,**

**they would rank fourth  
in food-sector employment  
in the County, with 581 jobs**



**Huntsville, Alabama**



# Androscoggin County Farms, 2012

**463 Farms**

**59,446 acres of land in farms**

**ARPZ district holds 1 of every 3 farm acres  
in County**



# Androscoggin County Farms, 2012

**463 Farms**

**Half are less than 50 acres**

**8 are larger than 1,000 acres**



# Androscoggin County Farms, 2012

**463 Farms**

**67% sold less than \$10,000**

**8% sold more than \$100,000**



## **Androscoggin County Farms, 2012**

**463 Farms**

**Sold \$54 million of farm products in 2012**

**\$42 million of livestock**

**\$12 million of crops**



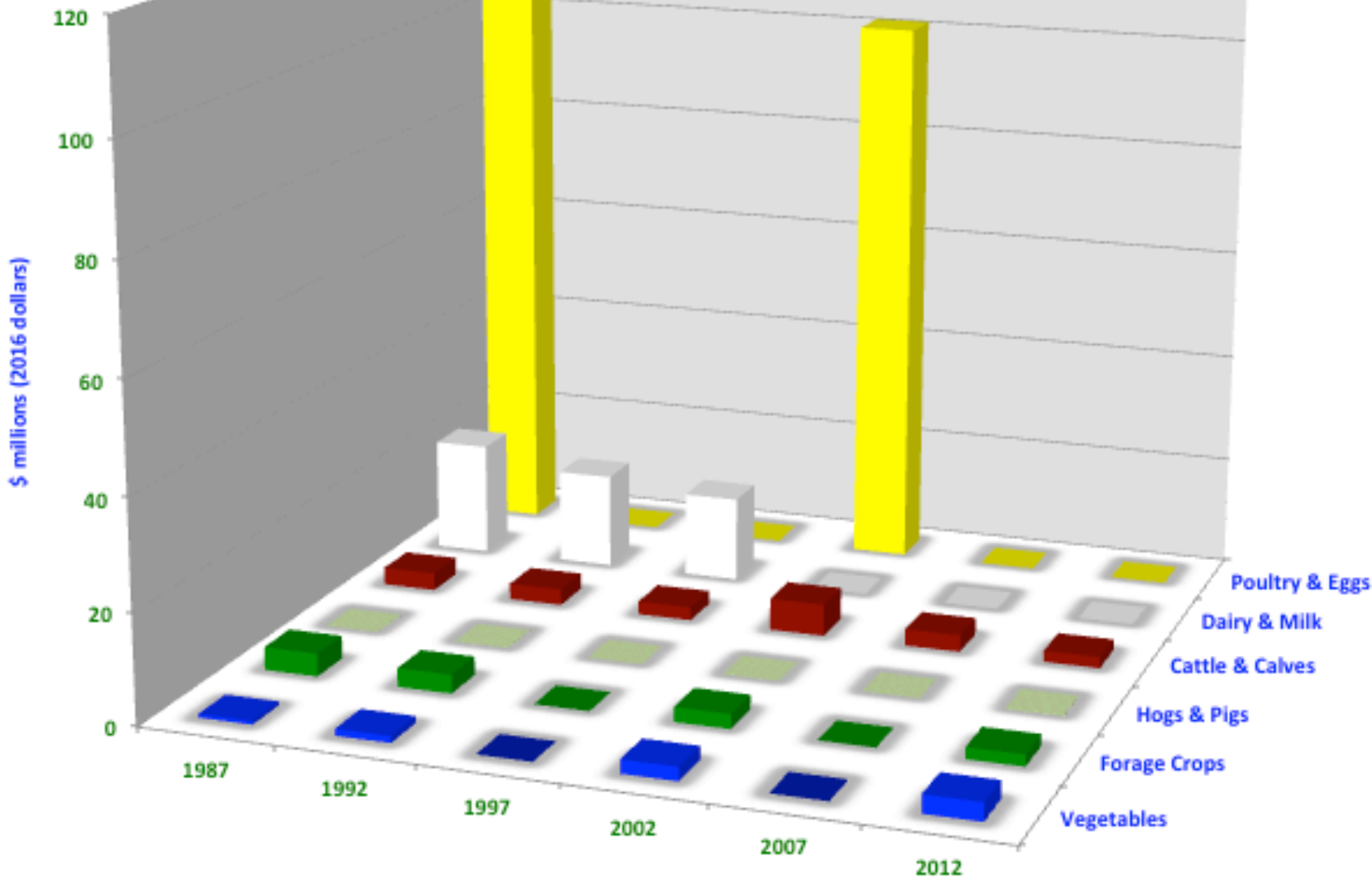


## Sales by Androscoggin County Farms, 2012

\$ millions

Poultry & eggs	(no data released)
Milk & Dairy Products	(no data released)
Forage crops	3.6
Vegetables	3.2
Cattle & calves	1.9
Hogs & Pigs	(no data released)

### Top Products Sold (Adjusted) by Androscoggin County Farms, 1987 - 2012

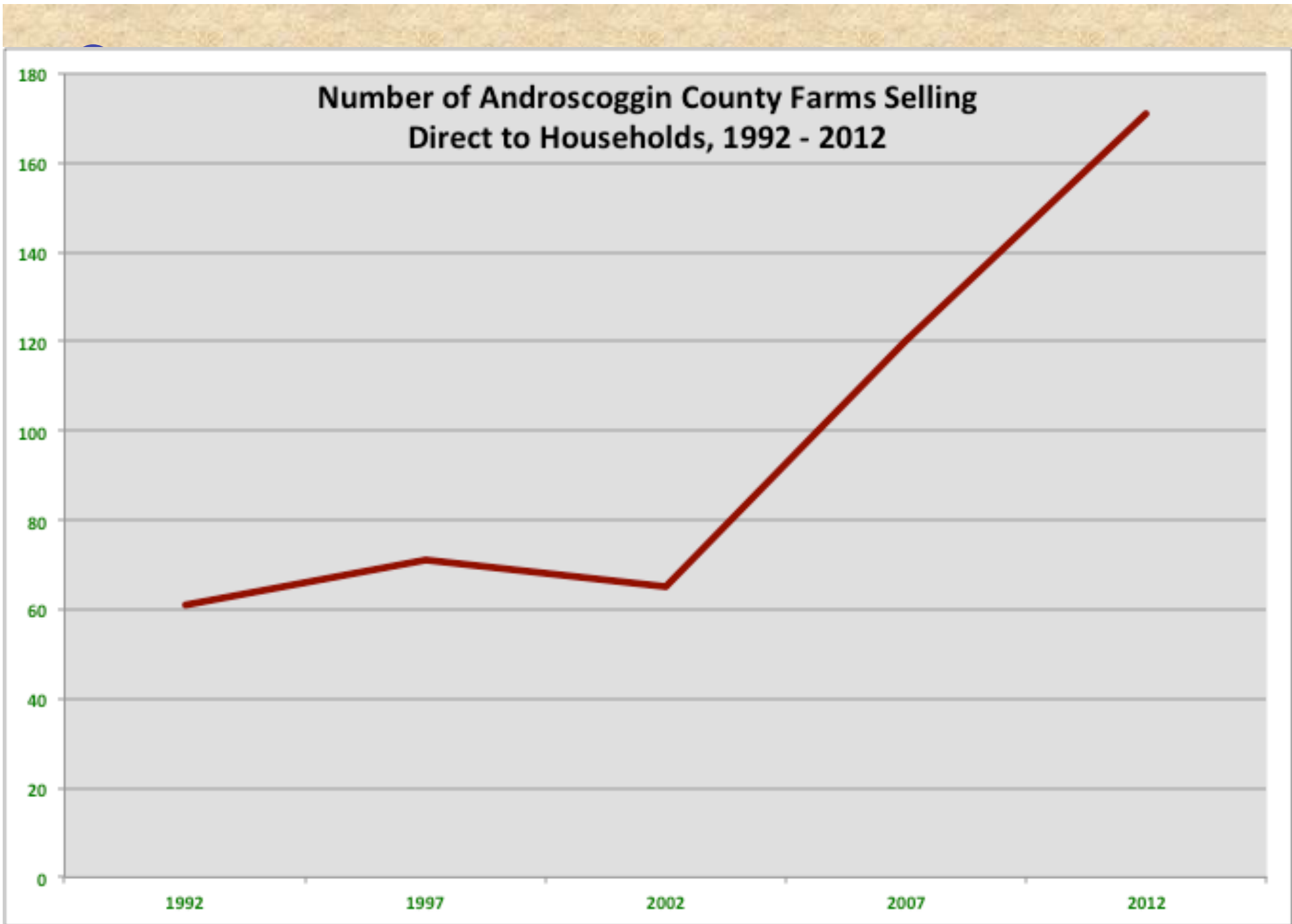




**Vegetable growing  
is the main sector  
of the County farm economy  
that is expanding**



**Bell Farms, Auburn**



Census of Agriculture, 1992 - 2012

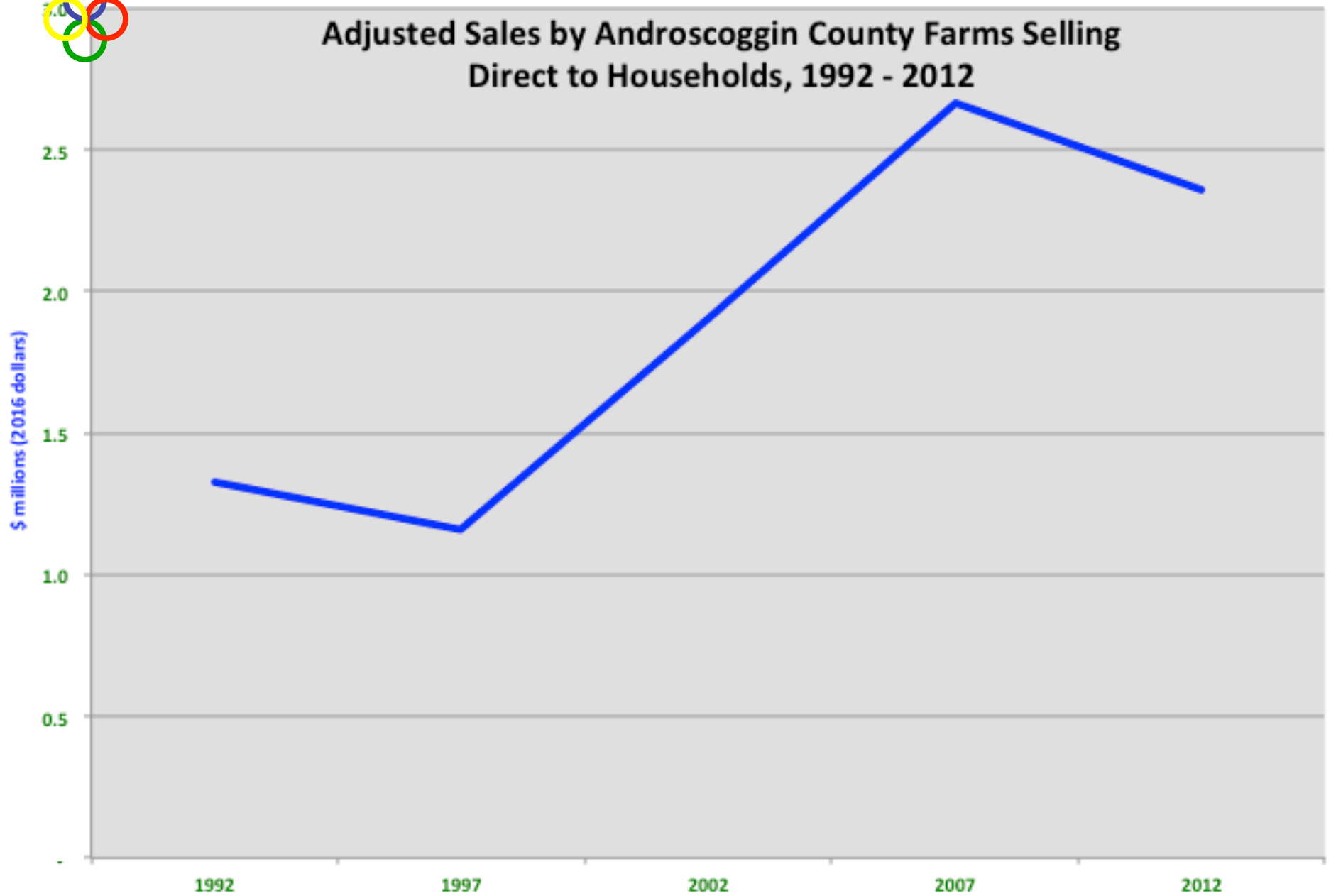


**The number of farms selling  
direct to households  
increased markedly (nearly tripling)  
from 65 in 2002 to 171 in 2012.**

**37% of farms now sell direct**



## Adjusted Sales by Androscoggin County Farms Selling Direct to Households, 1992 - 2012

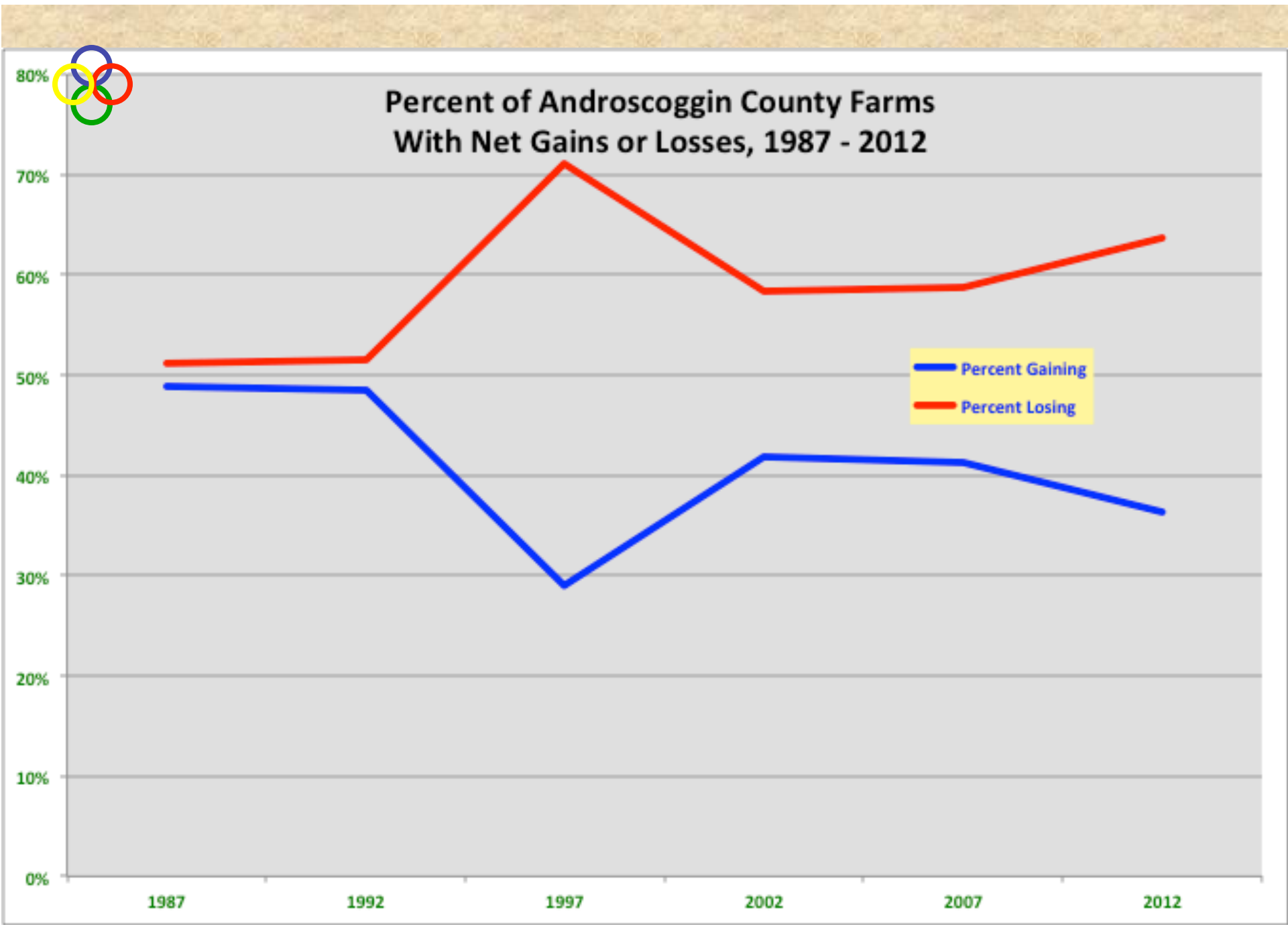


Census of Agriculture, 1992 - 2012



**This suggests there is strong interest among Androscoggin County consumers in purchasing food direct from nearby farms.**





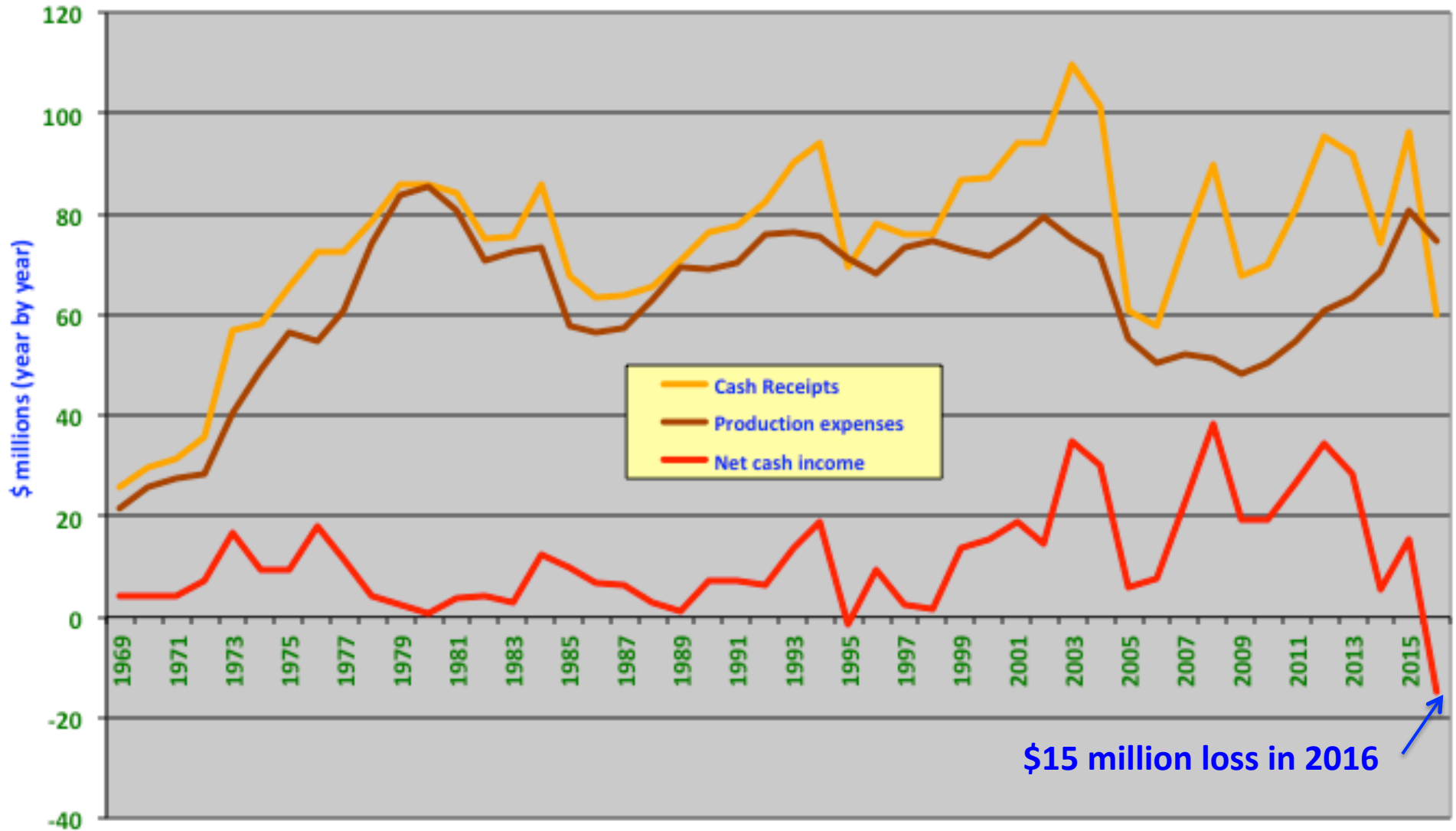
Census of Agriculture, 1987 - 2012



**Sunizona Farms, Willcox, Arizona**

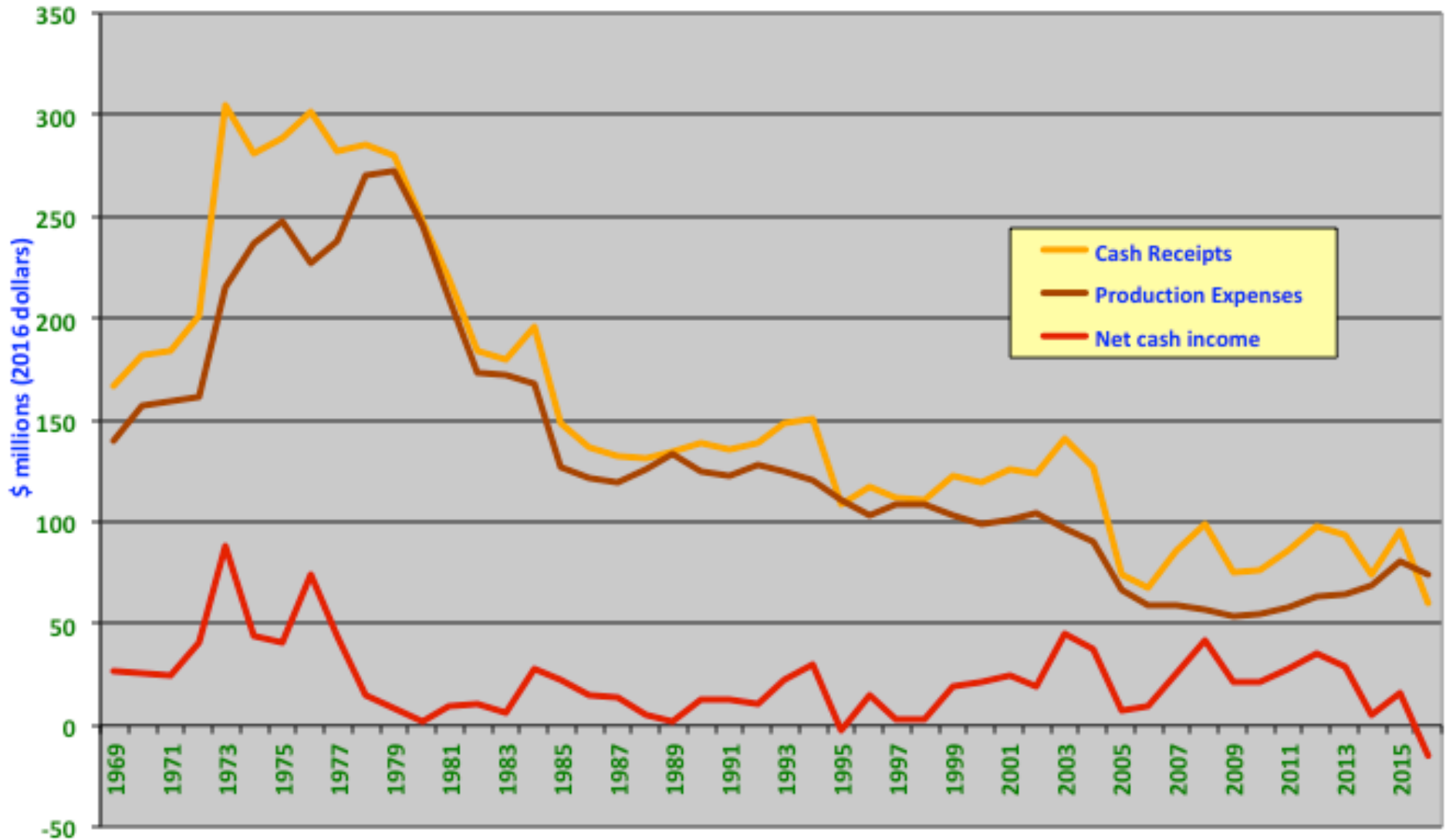


## Net Cash Income for Farmers in Androscoggin County, 1969-2016



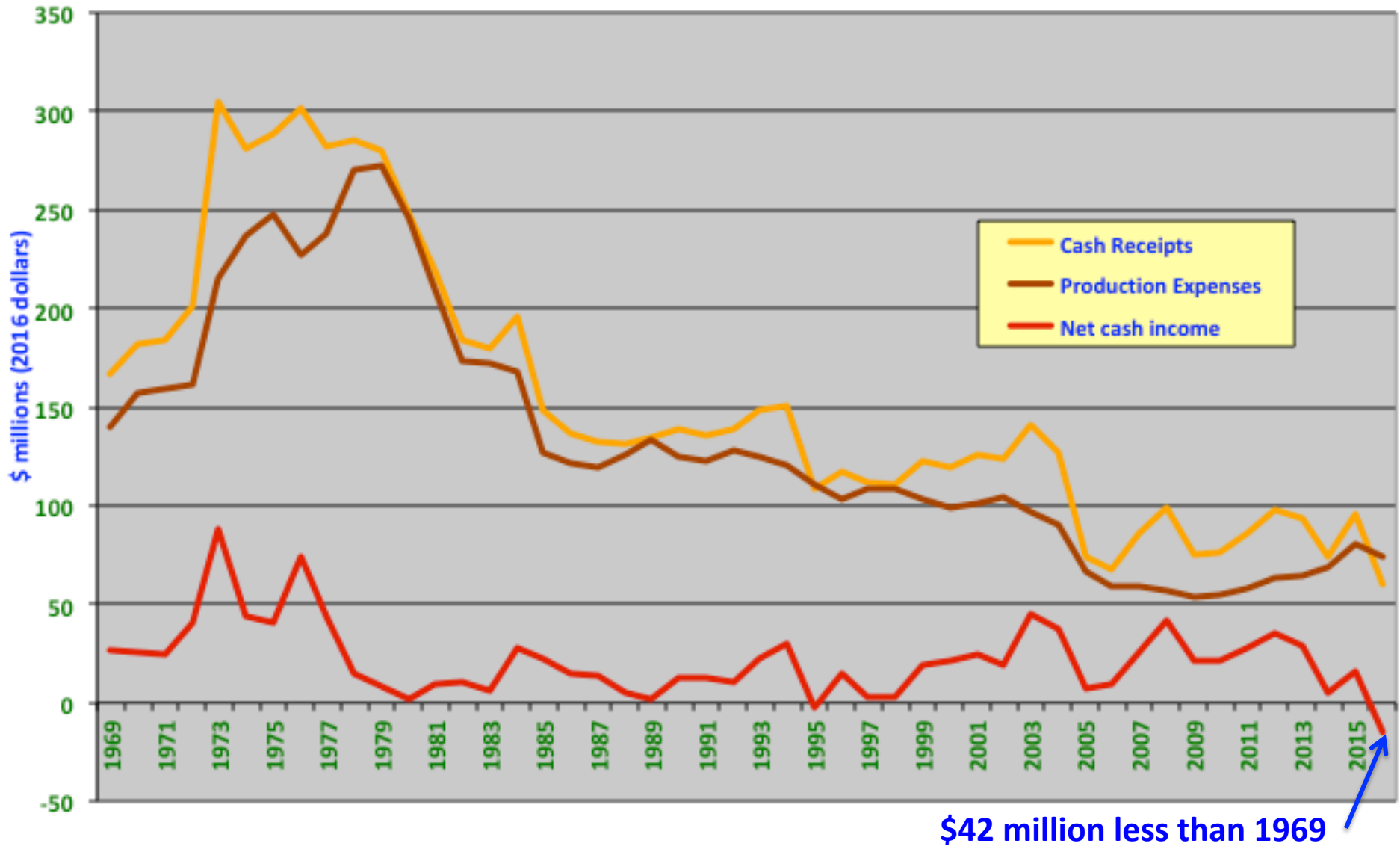


## Adjusted Net Cash Income for Farmers in Androscoggin County, 1969-2016



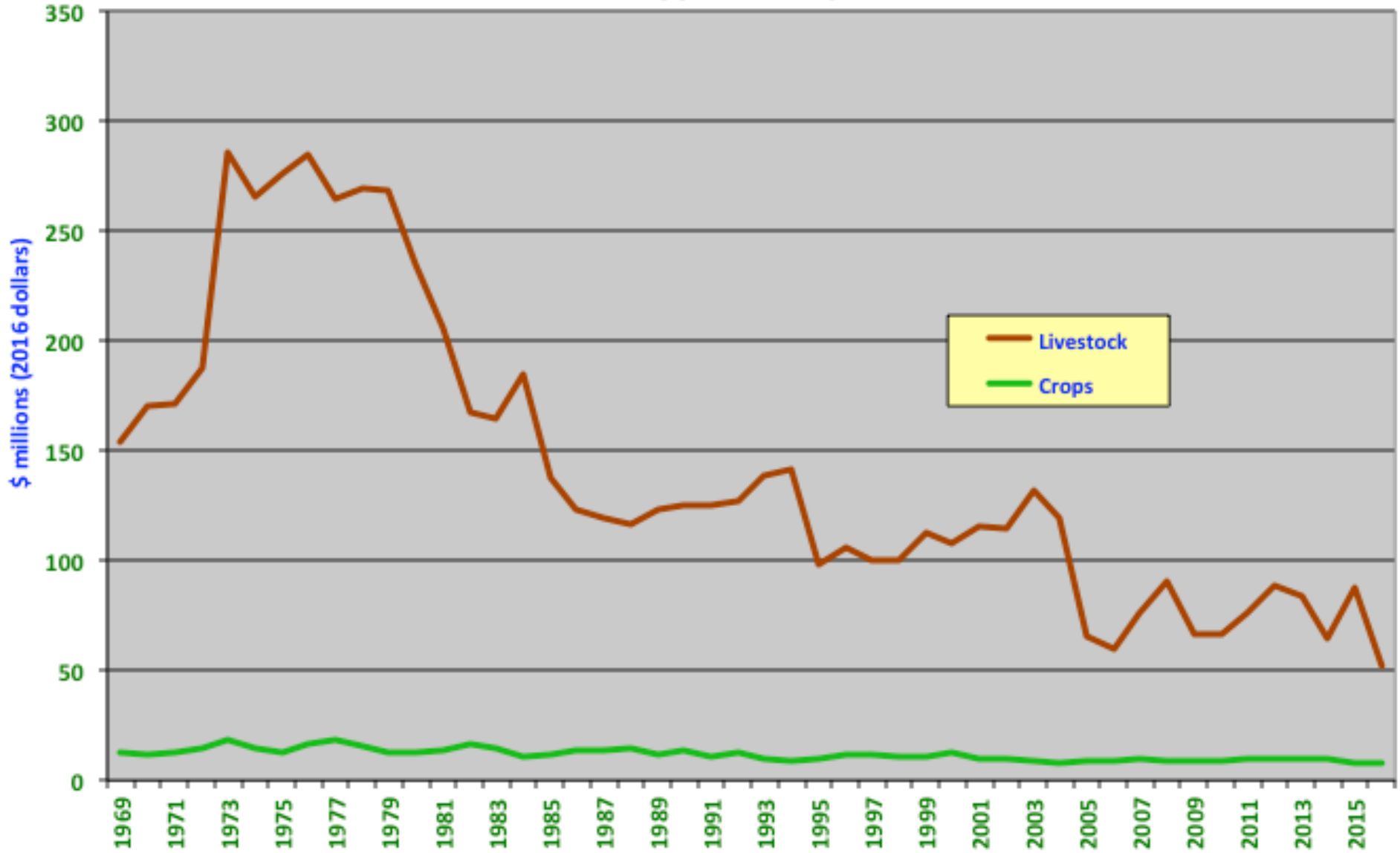


## Adjusted Net Cash Income for Farmers in Androscoggin County, 1969-2016



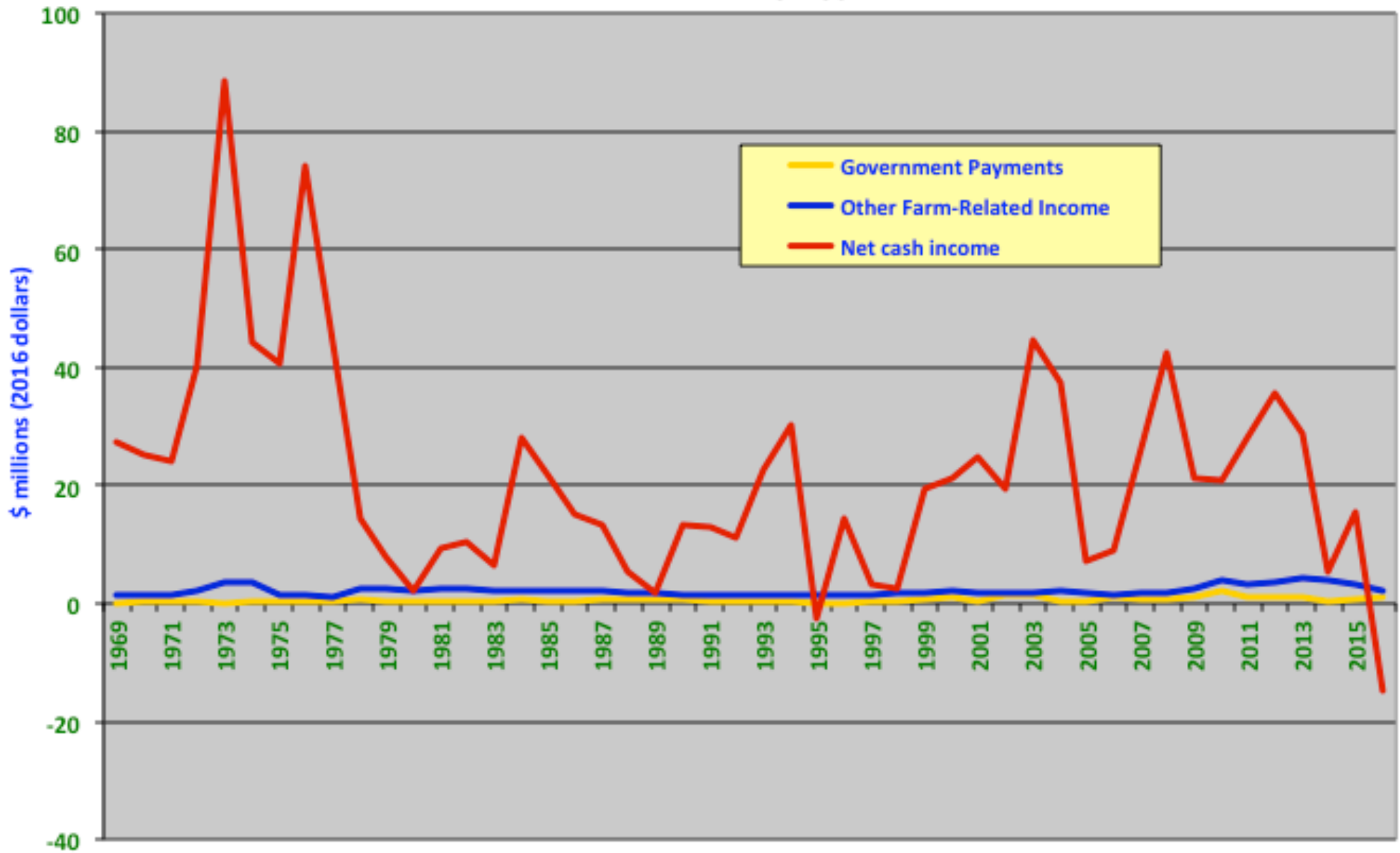


## Crop and Livestock Sales (Adjusted) in Androscoggin County, 1969-2016





## Androscoggin County Net Farm Income by Type, 1969-2016





Plainview, Minnesota





**Androscoggin County  
residents buy \$66 million  
of food each year**

**At least \$63 million  
sourced outside county**



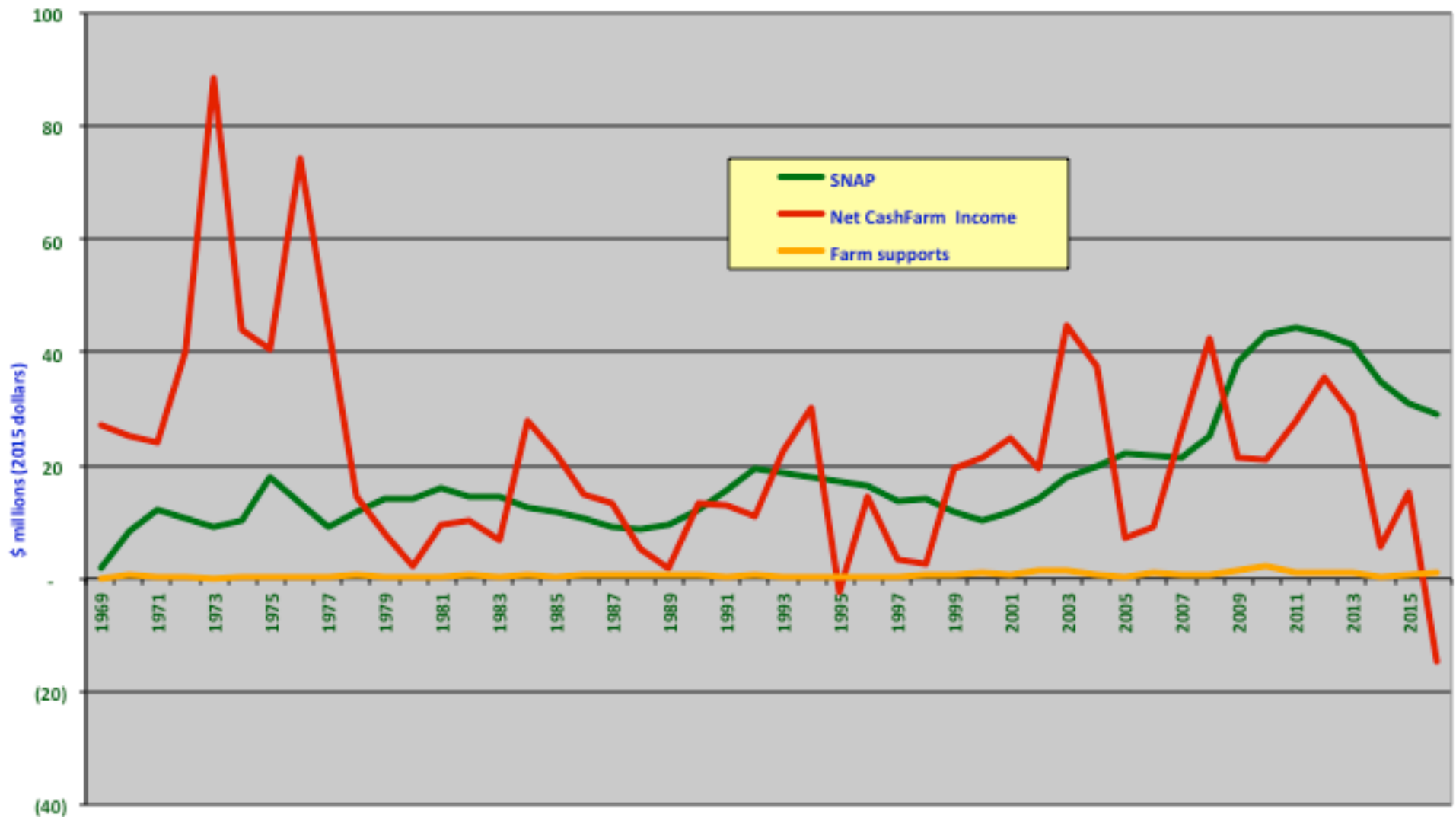
## Consumers matter

If each **Androscoggin County** resident bought \$5 of food directly from some farm in the county each week...

...farms would earn **\$5.9 million**



## Adjusted SNAP Benefits Compared to Farm Subsidies and Net Cash Farm Income in Androskoggin County, 1969 - 2016

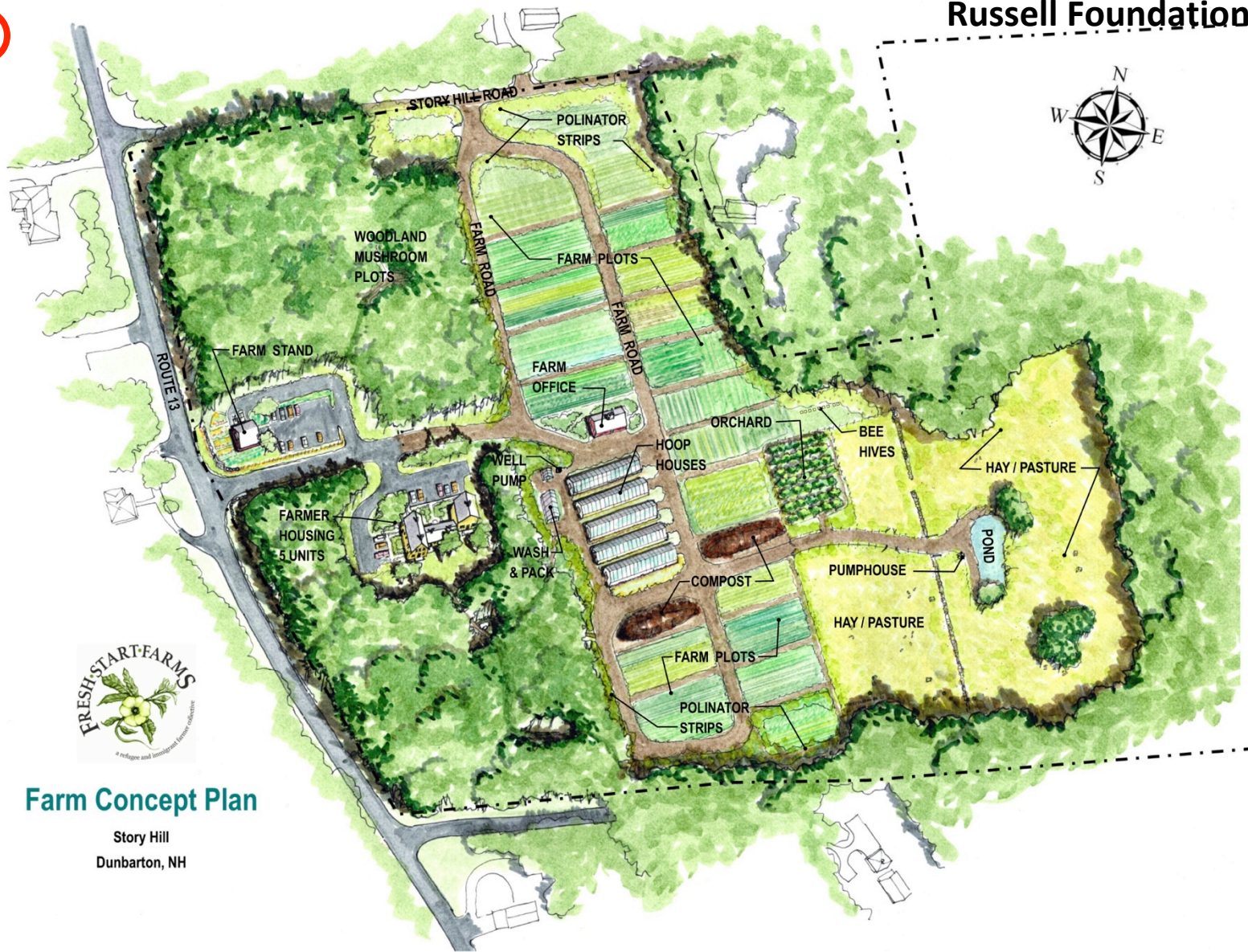




**Atlanta, Georgia**



Courtesy of Ian McSweeney  
Russell Foundation



### Farm Concept Plan

Story Hill  
Dunbarton, NH



# Fresh Start Farms (Concept)-- Dunbarton, NH



# GUNTHORP FARMS



*0435 N 850 E - Lagrange, IN*



**Gunthorp Farms -- USDA Slaughter & Processing on Farm**



**Bethel, Alaska**





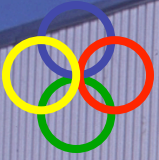
**Kansas City, Kansas**



**Kansas City, Kansas**



Viroqua, Wisconsin



Viroqua, Wisconsin



**Sue Noble, Vernon County Econ Devel Assn -- Western WI Food Enterprise Center**



Western WI Food Enterprise Center



**Western WI Food Enterprise Center**



609

**Viroqua, Wisconsin**





## **Multi-Stakeholder Co-op**

**Growers (40)**

**CEO of Gunderson Memorial Hospital**

**CEO of Reinhart Foods**

**Workers**

**All represented on one board**



# **Western Wisconsin Food Enterprise Center**

**Replaced 85 jobs lost in 2009**



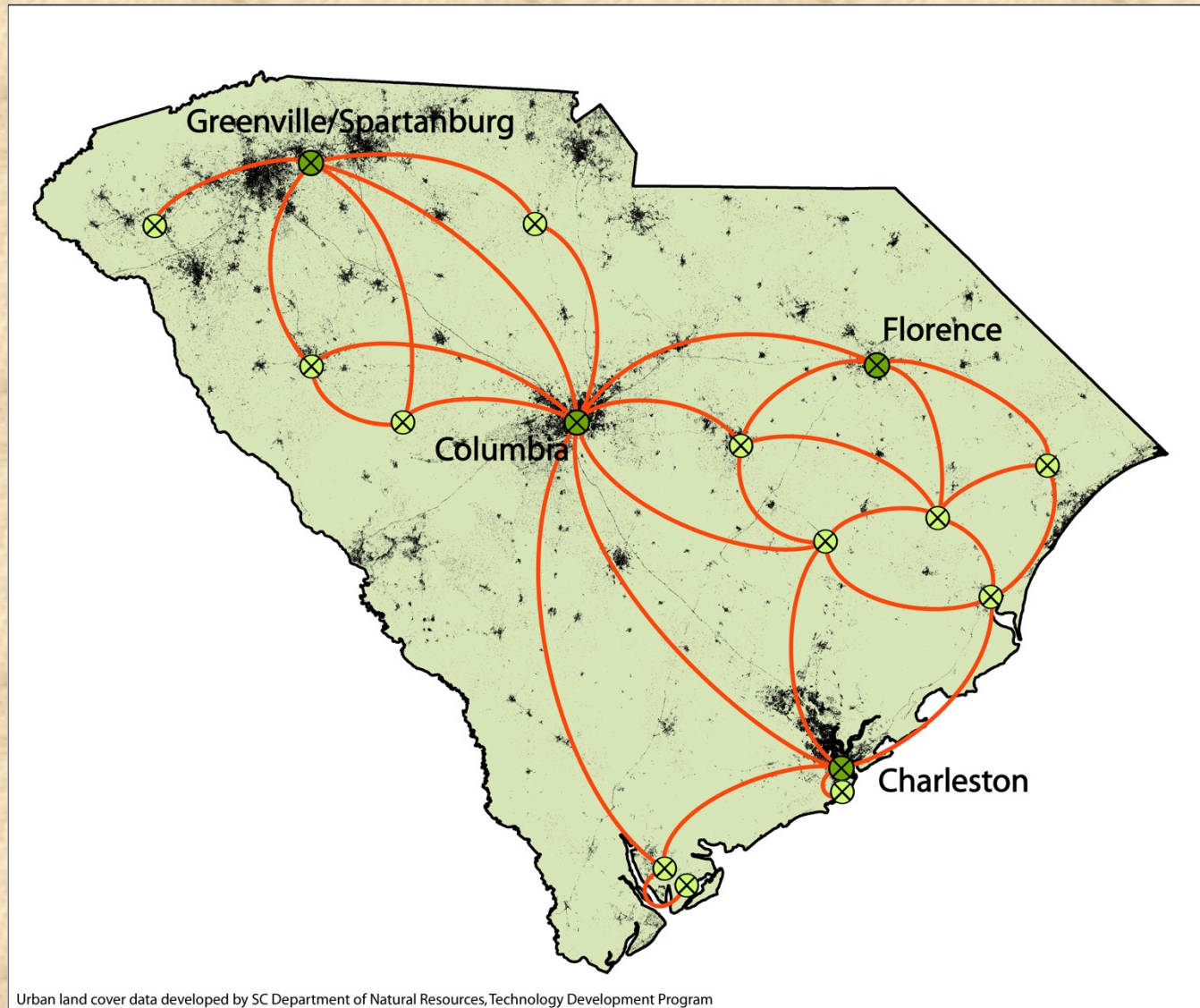
Bob Quinn Farm, Big Sandy, Montana



**Dan & Marguerite Guenther, Common Harvest Farm, Osceola, Wisconsin**



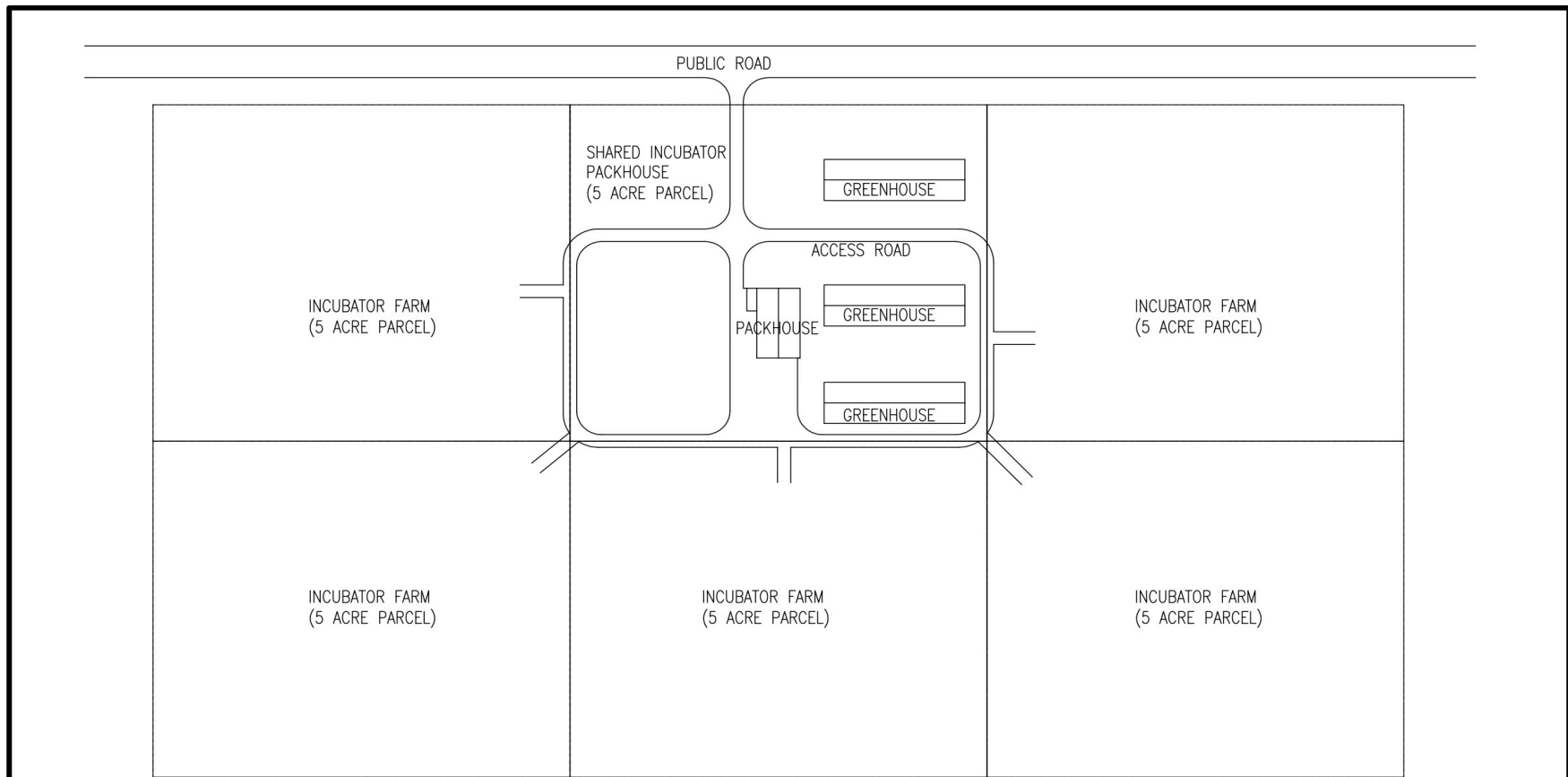
# South Carolina "Food Web"



**Meter & Goldenberg, Making Small Farms into Big Business (2003)**



# Incubator farm with packing shed



**freshArc**

Packhouse Prototype

4021 Vernon Ave. S #306  
St. Louis Park, MN 55416  
952.270.8321 / 651.808.2015  
www.fresharc.com

August 26th, 2013

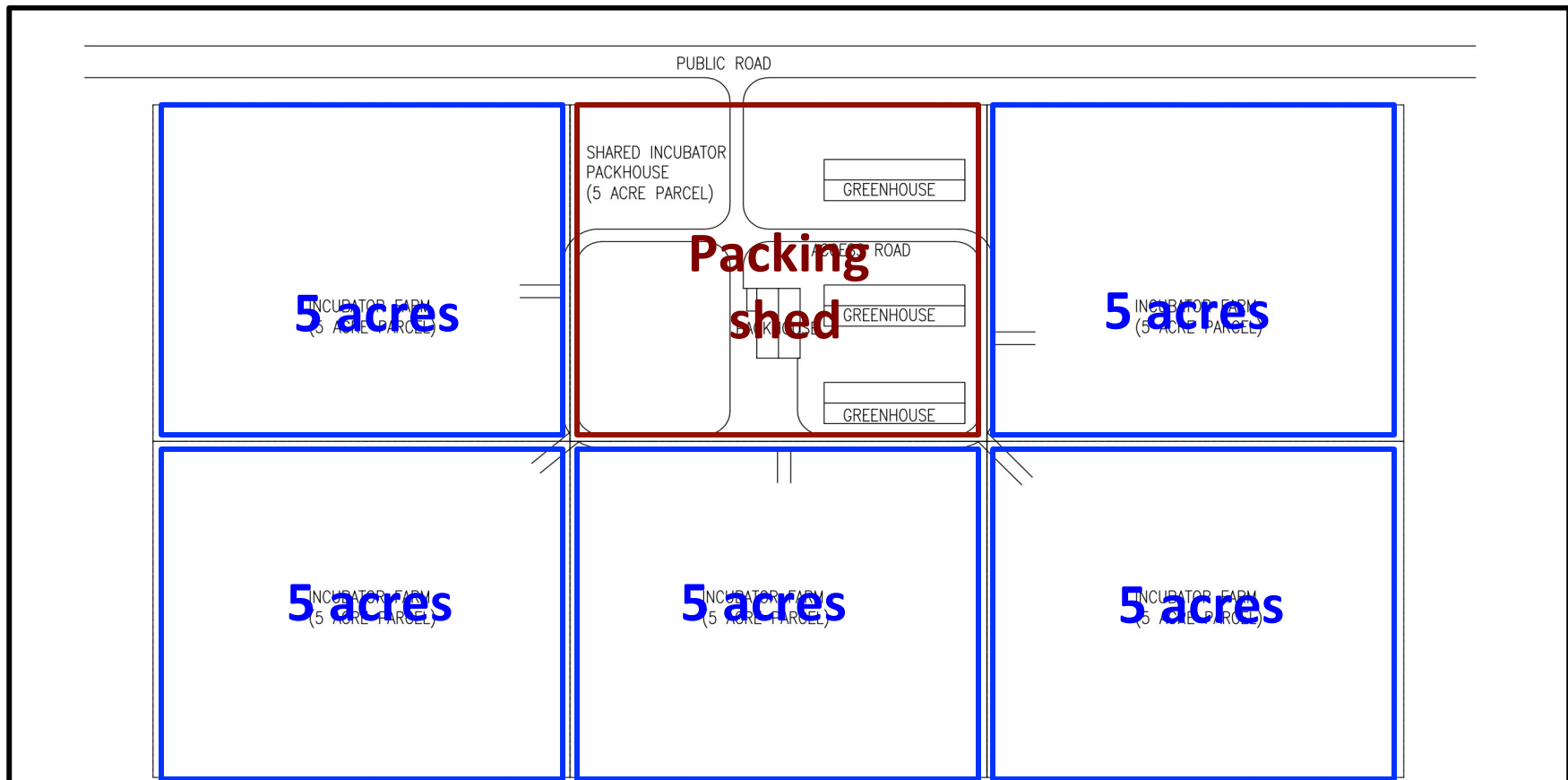
By PMH

Sheet  
of

1  
2



# Incubator farm with packing shed



**freshArc**

Packhouse Prototype

4021 Vernon Ave. S #306  
St. Louis Park, MN 55416  
952.270.8321 / 651.808.2015  
www.fresharc.com

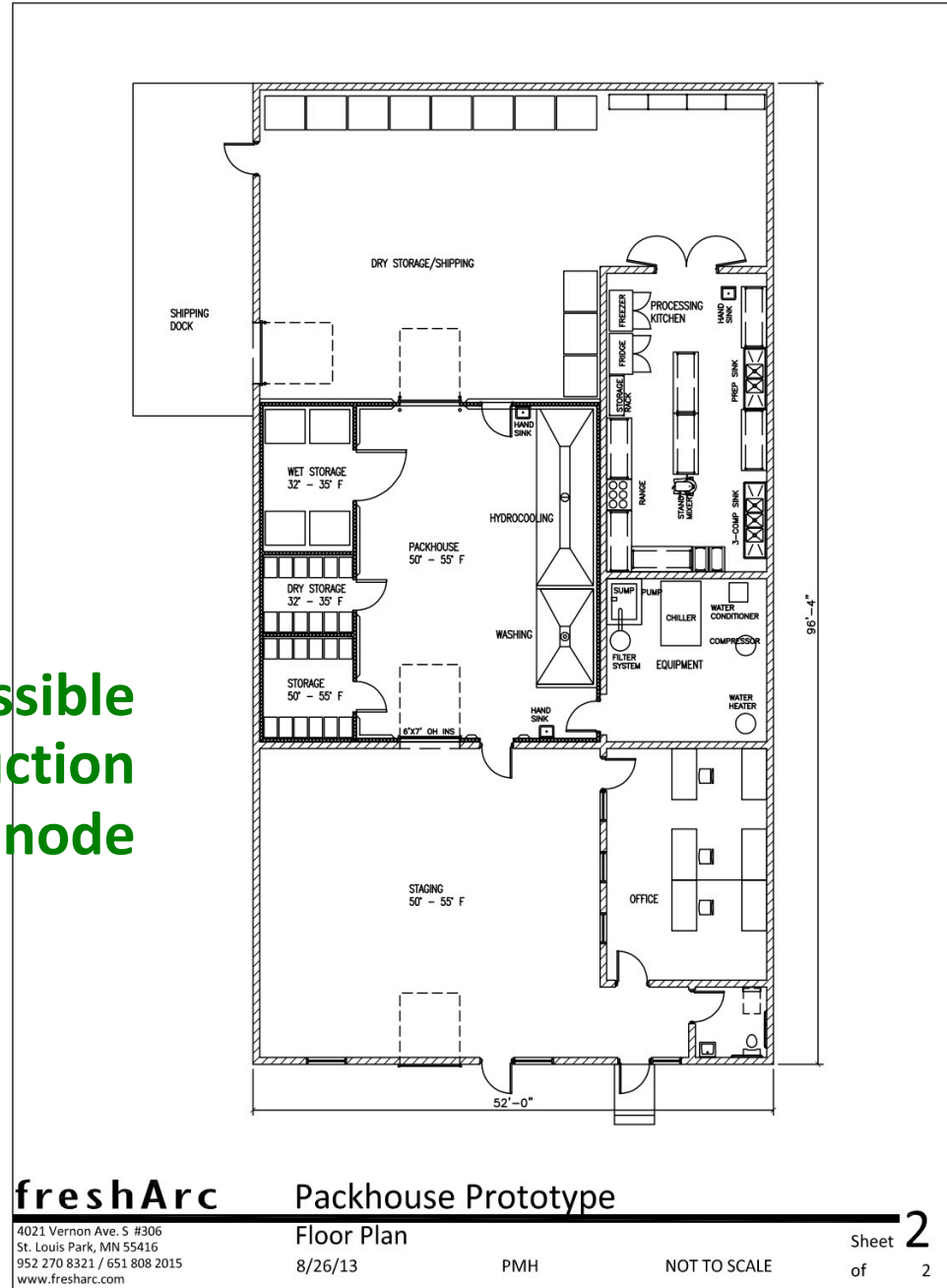
August 26th, 2013

By PMH

Sheet **1**  
of 2



One possible  
food production  
node



**freshArc** Packhouse Prototype

4021 Vernon Ave. S #306  
St. Louis Park, MN 55416  
952 270 8321 / 651 808 2015  
www.fresharc.com

Floor Plan

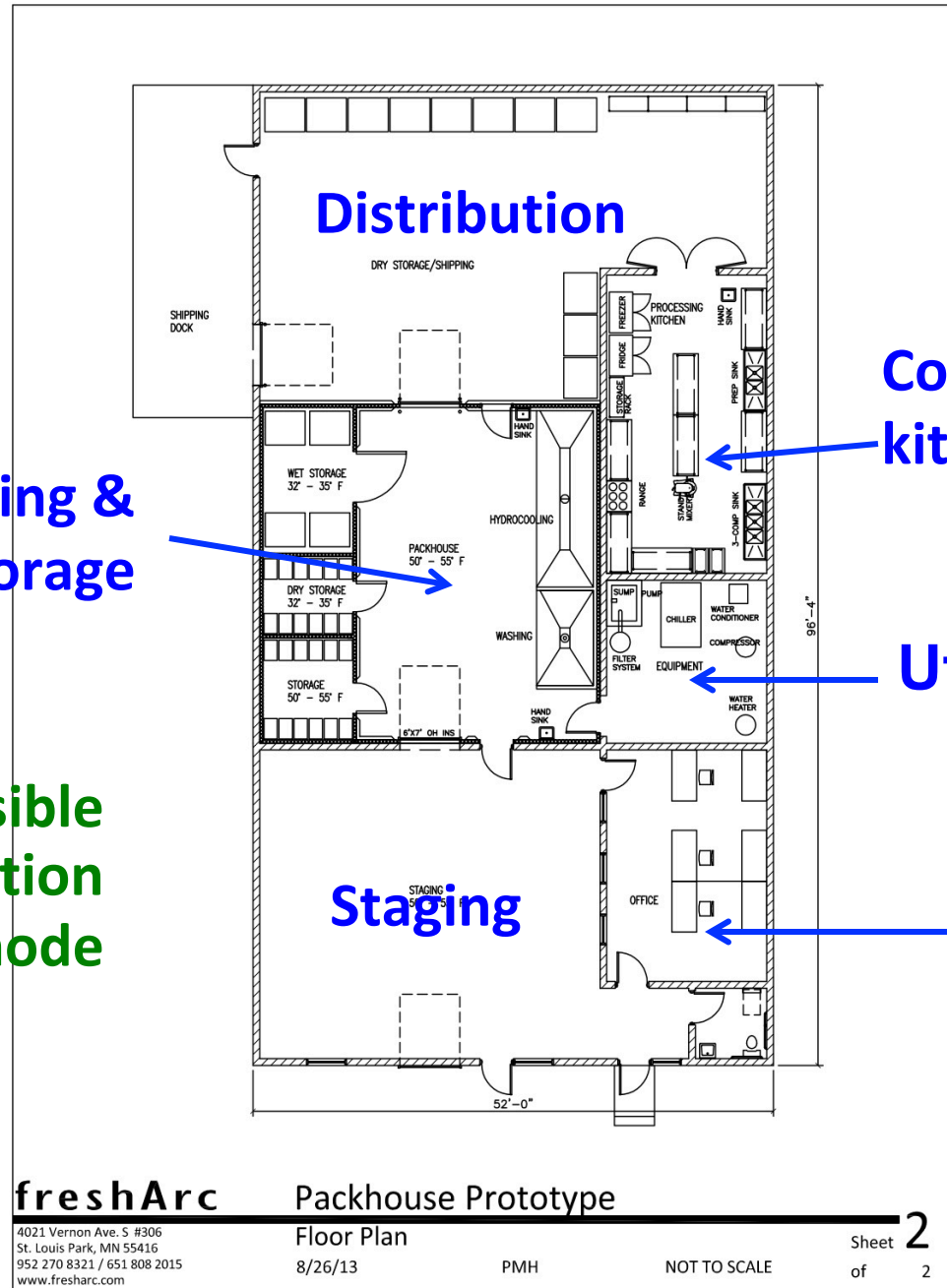
8/26/13

PMH

NOT TO SCALE

Sheet **2**  
of 2





Washing & Storage

Commercial kitchen

Utilities

One possible food production node

Staging

Offices

**freshArc**

Packhouse Prototype

4021 Vernon Ave. S #306  
St. Louis Park, MN 55416  
952 270 8321 / 651 808 2015  
www.fresharc.com

Floor Plan

8/26/13

PMH

NOT TO SCALE

Sheet **2**  
of 2



# Eat 5 Buy \$5

servings of fruit and vegetables per day

per week from a local producer

11,000 = households  
X \$5 per week  
= \$1.9 Million annually  
for  
Montezuma County  
Producers



Adopt  
marketing  
campaign

## Healthy food, people, economy

**Eat 5 servings of fruit and vegetables per day and reduce your risk of:**

**Spend \$5 per week with a local producer and**

- Obesity → Create local jobs
- Type 2 Diabetes → Support a farmer you know
- Heart Disease → Promote self-reliance
- Chronic Disease → Increase availability of farm-fresh food
- Cancer → Boost local revenue

Artwork by  
Carrie Cline  
Cortez, Colorado

# Northeast Indiana Regional Partnership

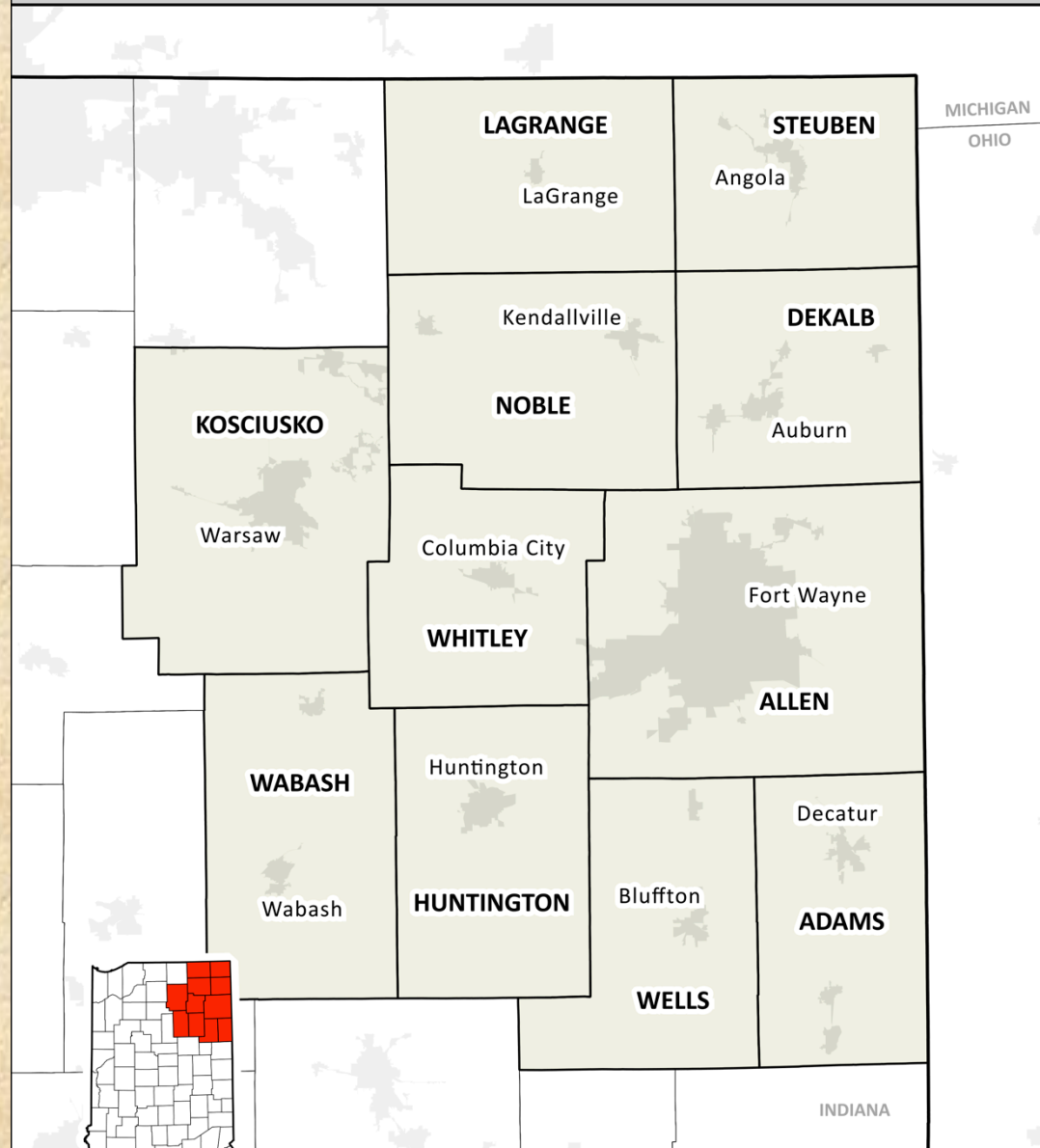
11 Local Economic  
Development  
Organizations

# Northeast Indiana Local Food Network





# Northeast Indiana Region



SOURCES : US Census Bureau TIGER 2010 Urban Areas; USDA / NRCS Counties 2002

Prepared for Ken Meter | Crossroads Resource Center | December 2015 | Mapping by Brendan Heberlein

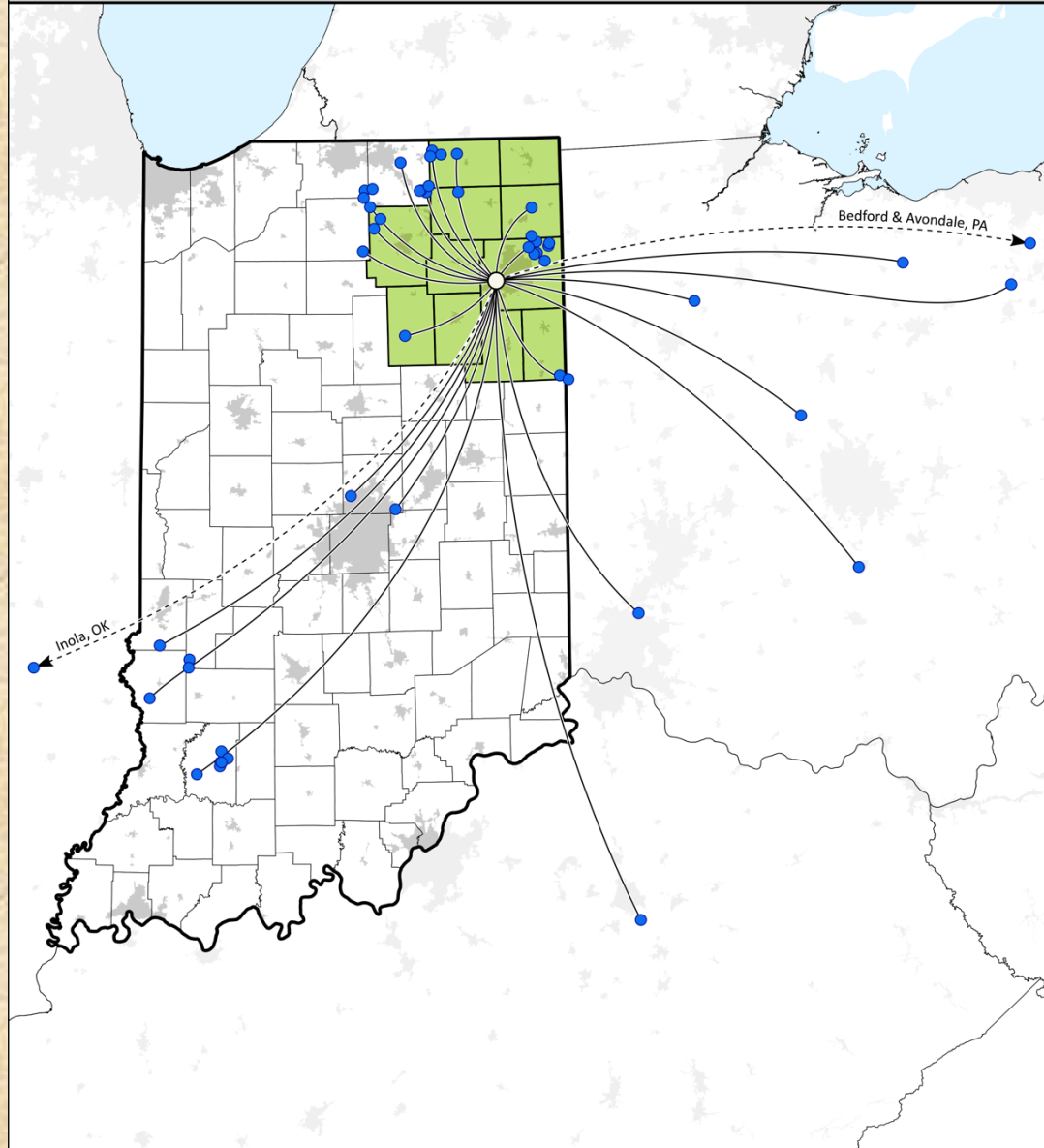


**Trellis Growing Systems – Fort Wayne**



# Trellis Growing Systems, LLC

Farmer Partners



0 20 40 60 80 100 mi

SOURCES : US Census Bureau TIGER/Line 2010 Urban Areas; USDA/NRCS Counties 2002; GLIN Great Lakes Boundaries 2012  
Prepared for Ken Meter | Crossroads Resource Center | December 2015 | Mapping by Brendan Heberlein



## NE Indiana Local Food Network

**“Local food networks” are the commercial, social, and cultural connections that sustain food trade within Northeast Indiana.**



Welcome to

Seven Sons



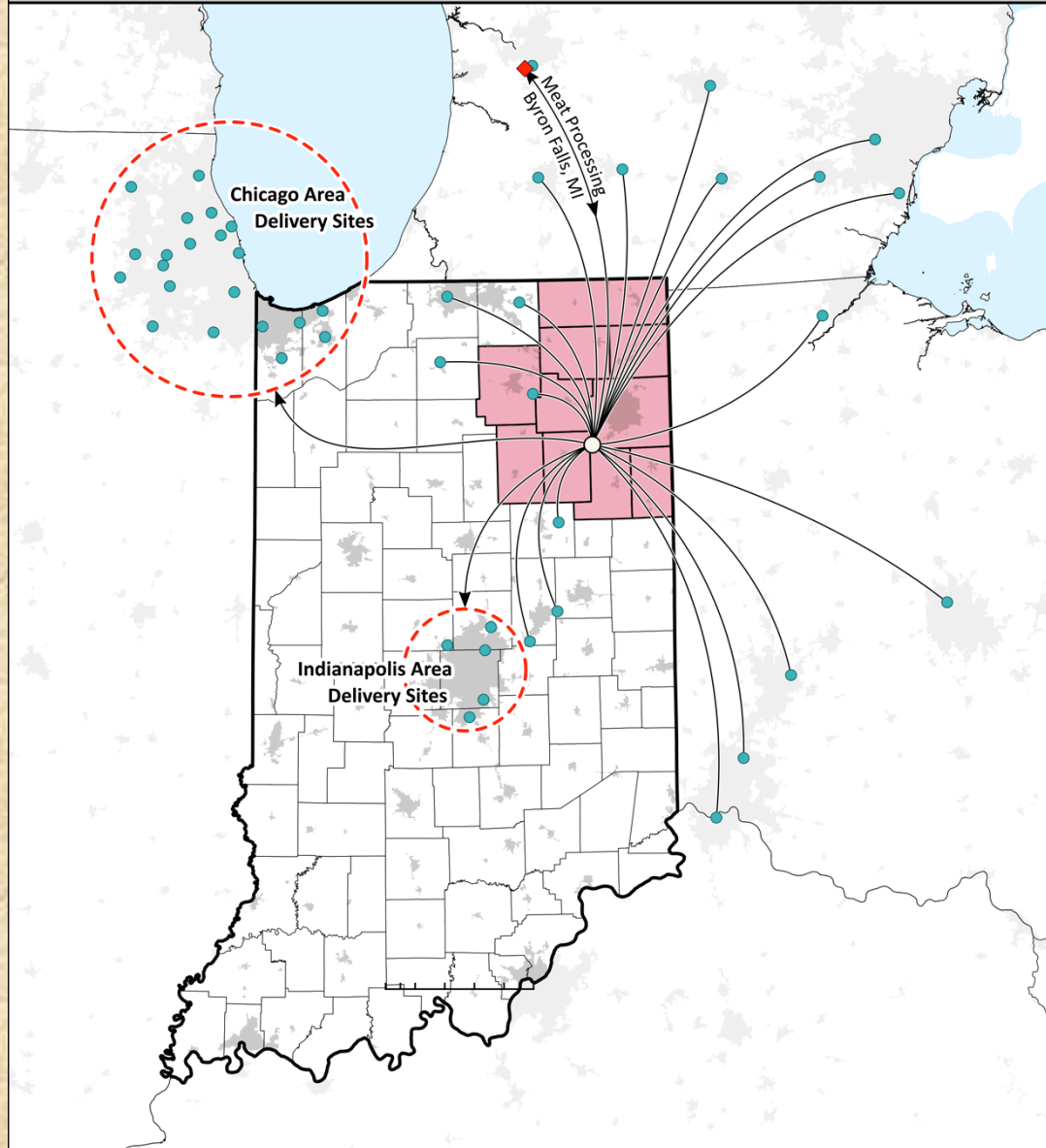


**Blaine Hitzfield**



# Seven Sons Farm

Delivery Sites



0 20 40 60 80 100 mi

SOURCES : US Census Bureau TIGER/Line 2010 Urban Areas; USDA/NRCS Counties 2002; GLIN Great Lakes Boundaries 2012  
Prepared for Ken Meter | Crossroads Resource Center | December 2015 | Mapping by Brendan Heberlein

**45 Drop Sites**  
**5,200 Names**



**Seven Sons Farm**

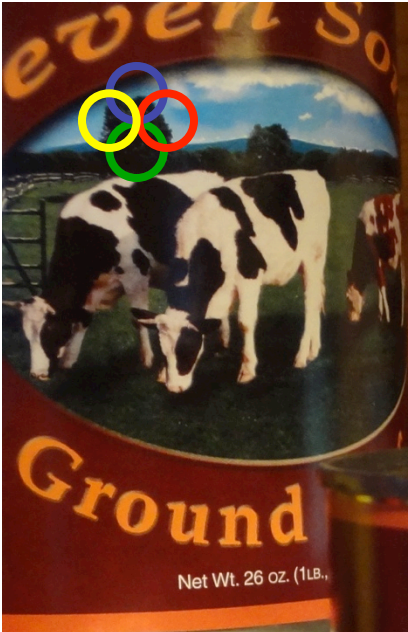


Seven Sons Farm



Seven Sons Farm

Seven Sons Farm



**Boned Chicken**  
Ingredients: Chicken  
Packed By  
Manley's Custom Butchering & Canning  
302 S 400 E, Decatur, IN 46730  
Net Wt. 27 Ounces. (1Lb., 11 Oz.)

Ground  
Net Wt. 26 oz. (1Lb., 10 oz.)





THE SMOKING GOOSE  
4037 NORTH CORPUS ST. INDIANAPOLIS, IN. 46202



APPLEWOOD  
SMOKED BACON

320111153

INDIANA MAPLE SYRUP, BROWN SUGAR

NET WT.  
12 OZ.



APPLEWOOD  
SMOKED BACON

PORK BELLY, INDIANA MAPLE SYRUP, BROWN SUGAR

SLOW CURED & HAND DRIED

GOOD CLEAN & FAIR

NET WT.  
12 OZ.

SG

Seven Sons Farm







# Vision for local food economies

**Build:**

**Health**

**Wealth**

**Connection**

**Capacity**

**“Local”** is a shorthand...



Photo: DSC



**Goal: to build  
Community-Based  
Food Systems**



Photo: DSC



## Community-Based Food Systems

Systems of exchange that strive to bring food producers and food consumers into affinity with each other...

...For the purposes of fostering community health, wealth, connection, and capacity





ORGANIC  
origin: CA  
ARKANSAS  
BLACK  
HEIRLOOM  
APPLES  
\$2.99/lb

Food Conspiracy Co-op, Tucson



# Food System



# Local Farm & Food Economy Studies

Ken Meter & Megan Phillips Goldenberg  
Crossroads Resource Center

[www.crcworks.org](http://www.crcworks.org)

[kmeter@crcworks.org](mailto:kmeter@crcworks.org)

(612) 869-8664